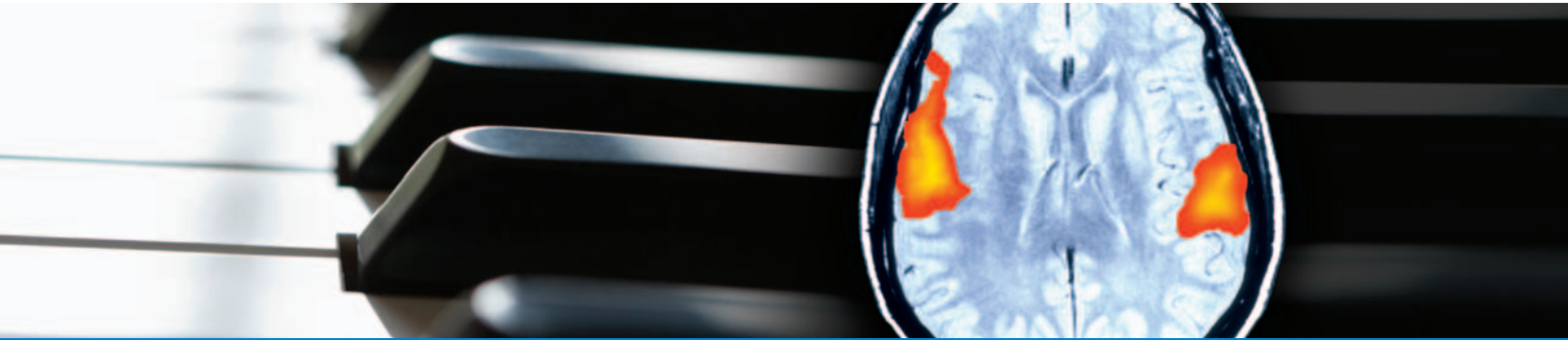


# Music and the Brain

Friday, June 6, 2008

InterContinental Hotel and Bank of America Conference Center  
Mixon Hall Cleveland Institute of Music

## Music and the Brain Faculty

### Course Directors

Kamal Chémali, MD  
Neil Cherian, MD

### Cleveland Clinic Faculty

Loutfi Aboussouan, MD  
Iva Fattorini, MD  
Damir Janigro, PhD  
Cynthia Kubu, PhD  
Richard Lederman, MD, PhD  
Ali Rezai, MD

### Guest Faculty

Prisca Benoit  
Conservatoire National Supérieur  
de Musique de Paris  
  
Richard Kogan, MD  
Weill Cornell Medical College  
  
Deforia Lane, PhD, MT-BC  
University Hospitals Health System  
  
Mark Tramo, MD  
Harvard Medical School  
  
Franz Welser-Möst  
The Cleveland Orchestra

### Faculty Disclosure Statement

The Cleveland Clinic Foundation Center for Continuing Education has implemented a policy to comply with the current Accreditation Council for Continuing Medical Education Standards for Commercial Support requiring resolution of all faculty conflicts of interest. Faculty declaring a relevant commercial interest will be identified in the activity syllabus.

## A Concert-Symposium on Music and the Brain

Neurologists | Physicians | Psychiatrists | Psychologists  
Nurses | Musicians

### Course Overview

This unique symposium will focus on the relationship between music and the physiological and pathological processes in the nervous system. It is aimed at educating physicians and musicians about this novel and unique field of “neuromusic” which studies the effect of music on the normal and abnormal physiology of the nervous system, treats certain neurological conditions using music as a therapeutic tool and treats the neurological consequences of misuse of music. It also aims at educating physicians and musicians about the status of the research in the field of music and the brain. Last but not least, it puts a particular emphasis on the impact of musical performance on the audience, and explores its parallel with the physician’s impact on the patient.

### Course Objectives

Upon completion of this activity, the participant will be able to:

- Discuss the beneficial effects of music on human physiology and the neurological system in particular
- Review the potential medical problems that result from misuse of music
- Describe the state of research in the field of music and the brain and the need for collaboration between musicians and neuroscientists
- Demonstrate the parallel and common links between the doctor-patient relationship and the musician-audience relationship

Cleveland Clinic Art and Medicine Institute in cooperation with the Neurological Institute present

## A Concert-Symposium on Music and the Brain in 4 Acts

### Libretto

- 9:00-9:15am **PRELUDE**  
Kamal Chémali, MD, Cleveland Clinic  
Neil Cherian, MD, Cleveland Clinic
- 9:15-10:15am **Keynote OVERTURE:**  
“Music Wired into the Brain”  
Mark Tramo, MD, Harvard Medical School  
Music and the Brain Institute

### ACT I: Music In Illness and For Illness

- Moderators: Kamal Chémali, MD  
Neil Cherian, MD
- 10:15-11:30am **Scene 1 – “For illness”**  
Music Therapy in Rehabilitation  
Deforia Lane, PhD, MT-BC, Case Western  
Reserve University
- 11:30-12:15am **Scene 2 – “In illness”**  
Musical Creativity and Mental Illness:  
Schumann – a concert and lecture presentation  
Richard Kogan, MD, Weill Cornell Medical College
- 12:15-1:15pm **Luncheon Intermission**

### ACT II: Clinical Aspects of Music in Medicine

- Moderators: Richard Lederman, MD, PhD  
Loutfi Aboussouan, MD
- 1:15-1:45pm **Scene 1: Common Disorders of Musicians**  
Richard Lederman, MD, Cleveland Clinic
- 1:45-2:15pm **Scene 2: The Role of the “Ear” in Music**  
Neil Cherian, MD, Cleveland Clinic
- 2:15-2:45pm **Scene 3: Impact of Music and Music Performance  
on Pulmonary Function**  
Loutfi Aboussouan, MD, Cleveland Clinic
- 2:45-3:00pm **Coda:** Announcements
- 3:00-3:15pm **Intermission**

### ACT III: Research Aspects of Music in Medicine

- Moderators: Iva Fattorini, MD  
Damir Janigro, PhD
- 3:15-3:35pm **Scene 1: Haptonomy and its Application to  
Musicians – A Demonstration on the Piano**  
Prisca Benoit  
Conservatoire National Supérieur  
de Musique de Paris
- 3:35-3:55pm **Scene 2: Music and the Autonomic Nervous System**  
Kamal Chémali, MD, Cleveland Clinic
- 3:55-4:15pm **Scene 3: The Emotional Aspects of Music**  
Cindy Kubu, PhD, Cleveland Clinic
- 4:15-4:35pm **Scene 4: Recording from the Brain**  
The Music of Neurons  
Ali Rezai, MD, Cleveland Clinic

### Coda

- Introduced by: Ali Rezai, MD, Cleveland Clinic
- 4:35-5:00pm **The Collaboration between Musicians and  
Neuroscientists**  
The First Music and the Brain Symposium at  
the Salzburg Festival 2008  
Franz Welsch-Möst, Music Director  
The Cleveland Orchestra
- 5:00-5:05pm Conclusion remarks and directions to the Gala Event
- 5:05-6:00pm **Intermission**
- 6:00pm **Complimentary transportation to Mixon Hall –**  
Cleveland Institute of Music  
11021 East Boulevard, Cleveland, OH 44106

### ACT IV: The Gala Finale

Mixon Hall at the Cleveland Institute of Music

- Moderators: Kamal Chémali, MD  
Neil Cherian, MD
- 6:45-7:30pm **Discussion Panel:** The effect of music or other arts in  
therapeutics and enhancing quality of life (physicians,  
musicians, patients and parents of music students)
- 7:30-7:45pm **Intermission**
- 7:45-9:00pm **Piano Recital**  
Prisca Benoit, piano
- 9:00-10:00pm **Standing Ovation Reception**

### Special Event: Doctor-Patient Music Connection

Wednesday, June 4th – InterContinental Hotel, Ballroom C

5:30pm **Piano and Chamber Music Recital**

7:00pm **Reception**

Cleveland Clinic’s Doctor – Patient Music Connection initiative is a program that aims at improving medical care by raising the level of patient-doctor relationship to a higher level of communication through performing arts. It consists of a series of musical concerts played by doctors and patients with special artistic talents, with the help of professional musicians from the community such as members of the Cleveland Orchestra and the Cleveland Institute of Music. By bringing the arts into their relationship and discussing this experience during the reception that follows the concerts, physicians and their patients may deepen their level of communication in an entertaining way and favor a higher level of care.

Physicians or patients with musical talents, who would like to participate, please contact Dr. Kamal R. Chémali at 216.444.5554 to schedule an audition.

## General Information

### Accreditation

The Cleveland Clinic Foundation Center for Continuing Education is accredited by the Accreditation Council for Continuing Medical Education to provide continuing medical education for physicians.

The Cleveland Clinic Foundation Center for Continuing Education designates this educational activity for a maximum of 6.75 *AMA PRA Category 1 Credit(s)*<sup>™</sup>. Physicians should only claim credit commensurate with the extent of their participation in the activity.

This activity may be submitted for American Osteopathic Association Continuing Medical Education credit in Category 2.

### Americans with Disabilities Act

The Cleveland Clinic Foundation Center for Continuing Education fully intends to comply with the legal requirements of the Americans with Disabilities Act. If you need assistance, please notify Mavi Golsmith at 216.932.3448 at least two weeks prior to the activity.

### Location

InterContinental Hotel & Bank of America Conference Center  
9801 Carnegie Avenue  
Cleveland, Ohio 44106  
216.707.4100 or 877.707.8999

### Driving Directions to Cleveland Clinic Main Campus

Due to ongoing construction at Cleveland Clinic and the local Euclid Corridor Transportation Project, traffic will be restricted on Euclid Avenue between East 89th and East 97th Street. For easy access to the hotel, travel on Carnegie Avenue to 100th Street.

### Evening Gala

If you are interested in attending the evening gala at Mixon Hall, please contact Mavi Golsmith at 216.932.3448 or [mavi@jamiebelkin.com](mailto:mavi@jamiebelkin.com).

### Special Needs

If you have any special needs that require additional assistance, please contact Mavi Golsmith at 216.932.3448 or [mavi@jamiebelkin.com](mailto:mavi@jamiebelkin.com). Requests must be received at least one week prior to the meeting.

### Exhibitors

For more information on exhibiting, please contact Marty Tobin at 216.445.3449 or [tobinm@ccf.org](mailto:tobinm@ccf.org).

### Summit Registration/Policy

General registration deadline is May 30, 2008. You can register online at [www.ccfme.org/music08](http://www.ccfme.org/music08) or use the attached registration form and fax to 216.445.9406. Please register on site after May 30th. Refunds and cancellations are subject to a \$50 service charge. A request for a refund must be received in writing by May 30, 2008. No refunds will be given after June 6, 2008.

## Music and the Brain Registration

CCF main campus, family health centers, and CCHS community hospital employees (physicians and non-physicians) should register online at the web address below.

**Register on-line:** [www.ccfme.org/music08](http://www.ccfme.org/music08)

If you register online, please do not mail or fax a duplicate registration form.

**Mail or Fax:** To register by mail or fax, complete and detach the registration form below and mail to: The Cleveland Clinic Educational Foundation, P.O. Box 931653, Cleveland, OH 44193-1082 or fax to 216.445.9406.

Name \_\_\_\_\_ Degree \_\_\_\_\_

Address \_\_\_\_\_

City \_\_\_\_\_ State \_\_\_\_\_ Zip \_\_\_\_\_ Country \_\_\_\_\_

Office Phone \_\_\_\_\_ Home Phone \_\_\_\_\_

Fax \_\_\_\_\_ E-mail \_\_\_\_\_

Company/Hospital Affiliation \_\_\_\_\_

Specialty \_\_\_\_\_ Title \_\_\_\_\_

### Payment Options

Total amount enclosed or to be charged: \$ \_\_\_\_\_

Make check payable to: *Cleveland Clinic Educational Foundation*

Or charge the following account:  Mastercard  Visa  Discover  American Express

Credit Card Number \_\_\_\_\_ 3/4 Digit Security Code \_\_\_\_\_

Signature \_\_\_\_\_ Expiration Date \_\_\_\_\_

### Course Registration Fee (Check appropriate box)

- Physician - \$189
- Non-Physician - \$125
- CCF Comprecare - \$123
- CCHS Physician Organization/CCF Alumni - \$114
- CCHS Physician/CCF Staff - \$75
- Resident\*/Fellow\*/Nurse Students  
CCF/CCHS Employee/Resident/Fellow/Student - \$50
- Professional Musicians - \$75

### Evening Gala and Luncheon

- I will attend the evening gala at Mixon Hall.
- I will attend luncheon.

Registration fee includes: attendance, syllabus, refreshment breaks, lunch and evening gala.

\*Letter from program director must be received in our office prior to the Symposium to receive this fee for resident or fellow.

### Office Use Only: Course 020521

Fee \_\_\_\_\_ Date \_\_\_\_\_

M.O.P. \_\_\_\_\_ CXL/Fee \_\_\_\_\_

Cleveland Clinic Art and Medicine Institute  
in cooperation with the  
Neurological Institute present



The Cleveland Clinic Foundation  
9500 Euclid Avenue / JJ36  
Cleveland, OH 44195

# Music and the Brain

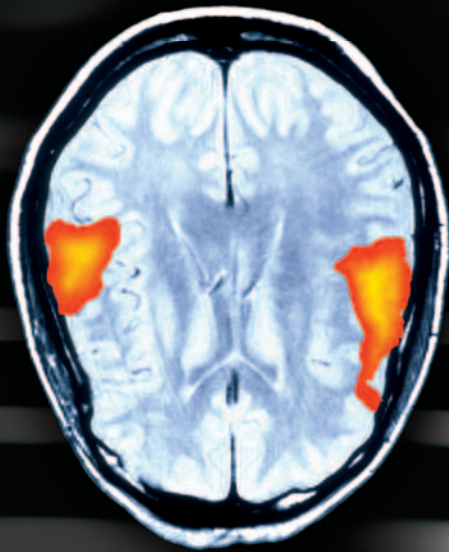
Friday, June 6, 2008

A Concert-Symposium on  
Music and the Brain

InterContinental Hotel &  
Bank of America Conference Center  
Cleveland, Ohio

[www.ccfme.org/music08](http://www.ccfme.org/music08)

Copyright © 2008 The Cleveland Clinic Foundation. All Rights Reserved.



Music and the Brain | Friday, June 6, 2008

Cleveland Clinic Art and Medicine Institute in cooperation with the Neurological Institute present

