

Mellen Center Regional Symposium on Multiple Sclerosis (MS)

June 12, 2009

InterContinental Hotel & Bank of America Conference Center
Cleveland, OH

An update in understanding and managing MS

About the Symposium

In the past 10 years our understanding of multiple sclerosis and its management have been revolutionized. New ideas have emerged in how we manage the symptoms of MS and in our treatment of the disease course. New concepts about cortical pathology, immune system activity in MS, and results of newer imaging techniques have radically altered our thinking about this disorder.

We are also focusing more on issues of wellness and quality of life as key components of MS care. Increasingly as MS Clinicians we are being asked to provide guidance for our patients on issues of depression, pain, cognition, and bowel and bladder management as part of their overall care.

Recognizing the importance of these changes in understanding and practice, the Mellen Center is offering a one-day program that focuses on better understanding MS, treating the symptoms, and managing the disease. Speakers with an expertise in basic and clinical research, MRI techniques, neuropsychiatric aspects of MS, and in clinical treatment of MS will share their experiences. There will also be a review of the Mellen Center approaches to issues such as progressive MS, natalizumab monitoring, and MRI use in follow up of patients with MS. We will have sessions on complex cases and on diseases that are similar to MS. New this year will be two afternoon tracks allowing a choice of talks for the participants depending on their various interests.

Target Audience

This symposium is intended for Physicians, Physician Assistants, Nursing Professionals and other health care practitioners engaged in the management and care of patients with multiple sclerosis. It will also be of interest to Psychological Professionals who want to learn more about this disorder and its effect on cognition and depression.

Learning Objectives

Upon completion of this activity, the participant will be able to:

1. Describe changes in our thinking about MS related to degeneration and axonal injury
2. Recognize depression and cognitive impairment in the MS population
3. Identify important bowel and bladder issues in MS and formulate an initial treatment plan
4. Recognize the importance of cortical pathology in MS
5. Communicate the importance of wellness activities in the care of MS patients

Agenda

8:30 am Registration & Continental Breakfast
Ballroom – 2nd Floor

Time for questions and answers are included in each presentation.

New Directions in MS Research and Treatment

9:00 am New Directions in MS
Richard Rudick, MD

9:45 am Lessons from MS Pathology
Bruce Trapp, PhD

10:30 am Refreshment Break & Exhibits

10:45 am Mellen Center Approaches – Interactive Session
Alex Rae-Grant, MD

11:30 am Complex Cases – Interactive Session
Robert Bermel, MD

12:15 pm Lunch

Track A: Symptom Management & Wellness

1:00 pm Depression and MS – *Randy Schiffer, MD*

1:45 pm Pain and MS – *Judith Scheman, PhD*

2:30 pm Refreshment Break & Exhibits

2:45 pm Bowel, Bladder and Sex with MS
Marie Namey, RN, MSN, MSCN

3:30 pm Patient Experience and Wellness
Adrienne Boissy, MD

Track B: Trials, Imaging, Cognition, & Cases

1:00 pm Clinical Trials Update: What's in the Pipeline
Robert Fox, MD

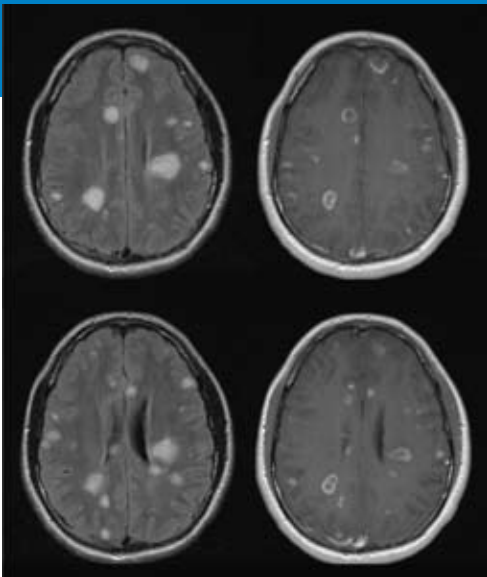
1:45 pm New Directions in MS Imaging
Stephen Jones, MD, PhD

2:30 pm Refreshment Break & Exhibits

2:45 pm Frontiers of Cognition and MS – *Stephen Rao, PhD*

3:30 pm When It's Not MS – Case Discussion
Alex Rae-Grant, MD

4:15 pm Adjourn



General Information

Location

InterContinental Hotel & Bank of America Conference Center
9801 Carnegie Avenue
Cleveland, Ohio 44106
Phone: 216-707-4100 or 877-707-8999

Parking

Complimentary parking is available in the Visitor's Parking Garage #2 located off 100th and Carnegie. From the garage, take the 3rd floor skyway to the hotel. Please bring your parking ticket to the conference registration desk for validation. Valet parking is available at the hotel at your own cost of \$10 per car for meeting attendance. Visit www.clevelandclinic.org for maps and directions.

Accreditation

The Cleveland Clinic Foundation Center for Continuing Education is accredited by the Accreditation Council for Continuing Medical Education to provide continuing medical education for physicians.

The Cleveland Clinic Foundation Center for Continuing Education designates this educational activity for a maximum of 6.0 *AMA PRA Category 1 Credits*[™]. Physicians should only claim credit commensurate with the extent of their participation in the activity.

Participants claiming CME credit from this activity may submit the credit hours to the American Osteopathic Association Council on Continuing Medical Education for Category 2 credit.

Ohio Psychological Association – Approval is pending.

State of Ohio Counselor, Social Worker and Marriage & Family Therapist Board – Approval is pending.

The Cleveland Clinic (OH-045/10-01-09) is an approved provider of continuing nursing education by the Ohio Nurses Association (OBN-001-91), an accredited approver by the American Nurses Credentialing Center's Commission on Accreditation.

Faculty Disclosure Statement

The Cleveland Clinic Foundation Center for Continuing Education has implemented a policy to comply with the current Accreditation Council for Continuing Medical Education Standards for Commercial Support requiring resolution of all faculty conflicts of interest. Faculty declaring a relevant commercial interest will be identified in the activity syllabus.

Registration and Cancellation

Register at www.ccfme.org/MS09. Registration deadline is **5:00 pm (EST), Wednesday, June 10, 2009**. A request for a refund must be received in writing by June 1, 2009. No refunds will be given after June 1, 2009, but registration is transferable through June 12, 2009. A \$25 cancellation fee will be deducted from the refund for all cancellations.

Please Note: If you register online, you will receive an immediate registration confirmation notice indicating that payment was processed. If the notice contains the word "error" please contact the registration office at 216-448-0777 to confirm registration. Mailed or faxed registrations will receive a confirmation notice by email unless requested otherwise on the registration form.

To check on the status of a faxed or mailed registration, please call 216-448-0777.

Americans with Disabilities Act

The Cleveland Clinic Foundation Center for Continuing Education fully intends to comply with the legal requirements of the Americans with Disabilities Act. If you need assistance, please notify Monet Smith at 216-444-9380 at least two weeks prior to the activity.

Information

For further information about this activity, contact Monet Smith at
Local: 216-444-9380; Toll Free: 800-223-2273 x49380; Email: smithm8@ccf.org

Cleveland Clinic Faculty

Symposium Director

Alex Rae-Grant, MD
Staff, Mellen Center for Multiple Sclerosis

Mellen Center for Multiple Sclerosis

Robert Bermel, MD
Adrienne Boissy, MD
Robert Fox, MD
Marie Namey, RN, MSN, MSCN
Richard Rudick, MD

Center for Brain Health

Stephen Rao, PhD
Randy Schiffer, MD

Chronic Pain Rehabilitation

Judith Scheman, PhD

Department of Neurosciences

Bruce Trapp, PhD

Imaging Institute, Division of Neuroradiology

Stephen Jones, MD, PhD

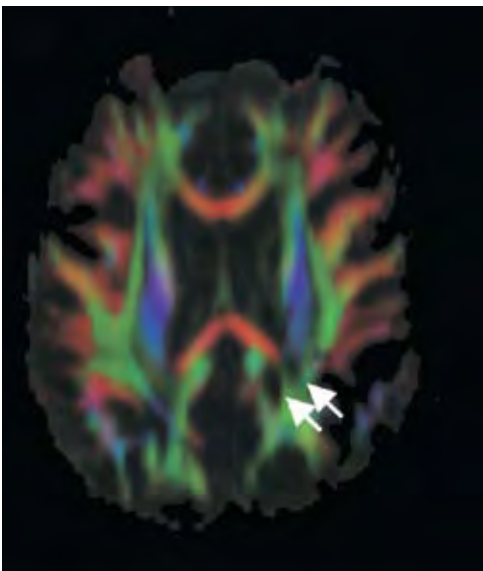
Symposium Steering Committee

Jeffrey Cohen, MD
Marie Namey, RN, MSN, MSCN
Janet Perryman
Alex Rae-Grant, MD
Matthew Sutliff, PT

The Cleveland Clinic Foundation
Neurological Institute, J36
9500 Euclid Avenue
Cleveland, OH 44195



Mellen Center Regional Symposium on Multiple Sclerosis (MS)



June 12, 2009

InterContinental Hotel &
Bank of America Conference Center

Cleveland, OH

An update in understanding and managing MS