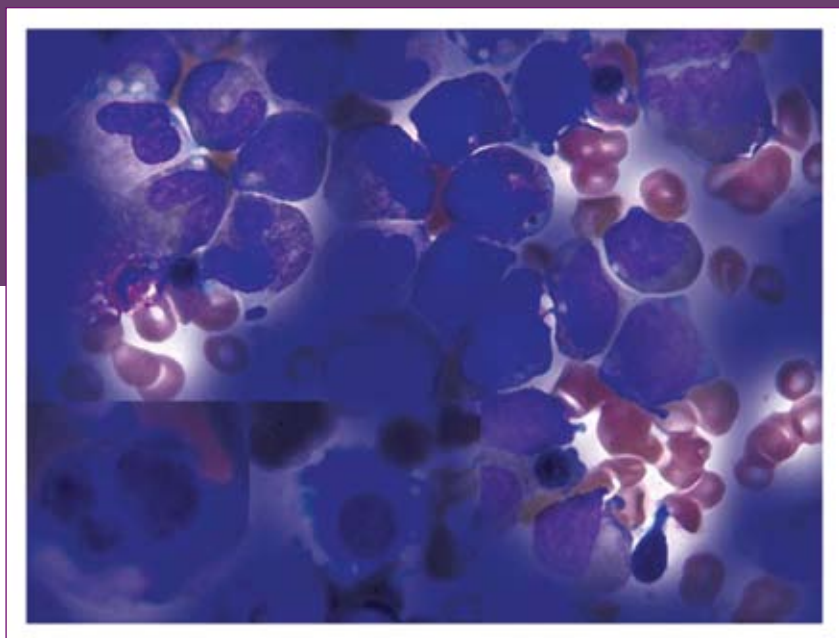


From MDS to AML and Back Again: How Disease Biology Allows Us to Personalize Therapy



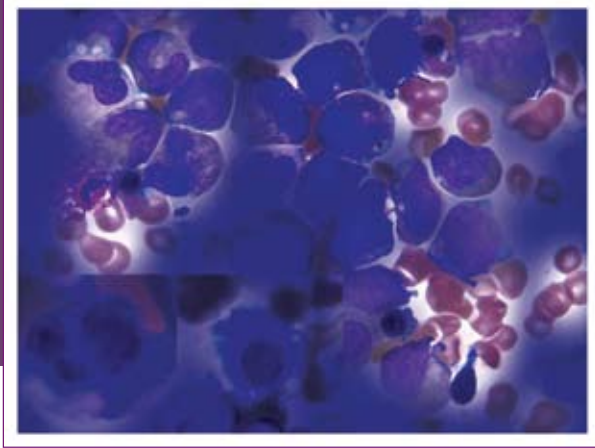
Sheraton New Orleans Hotel
Grand Ballroom C
New Orleans, LA

December 4, 2009 | 6:00 pm to 10:00 pm

*This is a Satellite Symposium organized by the Cleveland Clinic
Myelodysplastic Syndromes Program, preceding the 51st ASH Annual Meeting*

Register Online www.ccfcmec.org/ASHsatellite09

From MDS to AML and Back Again: How Disease Biology Allows Us to Personalize Therapy



Description

The bone marrow failure syndromes, myelodysplastic syndrome (MDS) and acute myeloid leukemia (AML), affect hundreds of thousands of people worldwide. The epidemiology, risk factors, and molecular characterization of these diseases vary in different countries. AML is the most common leukemia in the world, with the highest incidence rates in the United States, Australia, and western Europe. Incidence rates for MDS range from 1 per 100,000 in Japan to 12 per 100,000 in the United Kingdom; the US rate is 3.4 per 100,000. The scientific understanding of the molecular pathogenesis of these disorders has exploded in the past decade, and with it has come advances in pathobiologically driven therapies and predictors of response to therapies, the availability of which also varies across the world.

The goal of this program is to educate international hematology practitioners and researchers on the distribution and subtypes of MDS and AML worldwide. In addition to pathobiology and clonal evolution, it will also explore disease progression and treatment approaches for patients with MDS or AML syndromes with a focus on overlapping therapies. Participants will be empowered to develop treatment strategies that target mechanisms of neoplastic evolution and other basic MDS and AML disorder mechanisms.

Objectives

After completing this learning activity, the participant will be able to do the following:

- Summarize the underlying pathogenesis of MDS and AML and assess its impact on clinical practice;
- Describe the mechanisms of transformation of MDS to AML;
- Compare and contrast the treatment goals for MDS and AML and how they overlap;
- Evaluate the clinical implications of using MDS therapies in AML patients and vice-versa;
- Design a management strategy for improving outcomes in patients with MDS or AML.

Target Audience

The satellite symposium is designed for an international audience including medical oncologists, hematologists, clinical and translational researchers, and other physicians and allied healthcare professionals treating patients with MDS or AML. In addition, members of patient advocacy groups will benefit from this program.

Faculty

Steven D. Gore, MD

Professor of Oncology
Sidney Kimmel Comprehensive Cancer Care
Center at Johns Hopkins Hospital
Baltimore, Maryland

Alice Houk, MS

Director, Health Professional Programs
Aplastic Anemia & Myelodysplastic Syndromes
International Foundation, Inc.,
Rockville, Maryland

Jaroslaw P. Maciejewski, MD, PhD

Chairman and Professor of Medicine
Department of Translational Hematology &
Oncology Research
Taussig Cancer Institute
Cleveland Clinic
Cleveland, Ohio

Luca Malcovati, MD

Assistant Professor of Hematology
Department of Hematology
University of Pavia Medical School
Pavia, Italy

Richard M. Stone, MD

Director, Leukemia Program
Dana-Farber Cancer Institute
Professor of Medicine
Harvard Medical School
Boston, Massachusetts

Richard A. Wells MD, DPhil, FRCPC

Director, Cancer Research
Odette Cancer Centre
Sunnybrook Health Sciences Centre
Toronto, Canada

Agenda

Friday, December 4, 2009

6:00 pm Registration and Reception

6:50 pm Introduction

Jaroslaw Maciejewski, MD, PhD

7:00 pm The Changing Clinical Picture of MDS and AML Worldwide

Luca Malcovati, MD

7:25 pm MDS Progression to AML: Mechanisms of Clonal Evolution

Jaroslaw Maciejewski, MD, PhD

7:50 pm MDS and AML Therapeutic Strategies: Similarities, Differences, and Overlap

Steven Gore, MD

8:15 pm Clinical Implications: Applying MDS Therapies to AML Patients and Vice-Versa

Richard Stone, MD

8:40 pm Effective Management Strategies for Improving Outcomes in MDS or AML Patients

Richard Wells, MD

9:05 pm Future Directions in Pharmacotherapy: Outcomes for MDS and AML Patients

Alice Houk, MS

9:20 pm Discussion

9:50 pm Adjourn

A five-minute question and answer period is included in each presentation.





New Orleans photos provided by the
New Orleans Convention & Visitors Bureau



General Information

Information

For further information about this symposium, contact UNITECH Communications® at:

Local: 216-448-0777 | Toll Free: 800-238-6750 | Fax: 216-448-0783

Web Address: www.cfcme.org/ASHsatellite09

For questions about registering online, call 216-448-0777.

Registration and Cancellation

Pre-registrations are accepted by fax or online until 5:00 pm ET December 1, 2009. To register after this date, please do so on-site.

Accreditation Statement

The Cleveland Clinic Foundation Center for Continuing Education is accredited by the Accreditation Council for Continuing Medical Education to provide continuing medical education for physicians.

The Cleveland Clinic Foundation Center for Continuing Education designates this educational activity for a maximum of 3.0 *AMA PRA Category 1 Credits*™. Physicians should only claim credit commensurate with the extent of their participation in the activity.

Participants claiming CME credit from this activity may submit the credit hours to the American Osteopathic Association Council on Continuing Medical Education for Category 2 credit.

Americans with Disabilities Act

The Cleveland Clinic Foundation Center for Continuing Education fully intends to comply with the legal requirements of the Americans with Disabilities Act. If you need assistance, please contact UNITECH Communications® at 800-238-6750 at least two weeks prior to the activity.

Faculty Disclosure

The Cleveland Clinic Foundation Center for Continuing Education has implemented a policy to comply with the current Accreditation Council for Continuing Medical Education Standards for Commercial Support requiring resolution of all faculty conflicts of interest. Faculty declaring a relevant commercial interest will be identified in the activity syllabus.

Acknowledgements

The Cleveland Clinic Foundation Center for Continuing Education acknowledges an educational grant for support of this activity from:

**Aplastic Anemia and MDS International Foundation and
Celgene Corporation**

Registration Form

Course #011637
Office Use Only

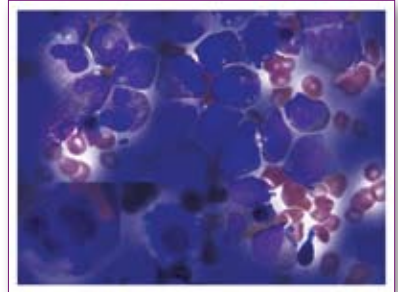
Date: _____

From MDS to AML and Back Again: How Disease Biology Allows Us to Personalize Therapy

Friday, December 4, 2009

Registration Fee: COMPLIMENTARY

- Physician
- Researcher
- Nurse
- Resident/Fellow
- Physician Assistant
- Other
(Specify: _____)



Online Registration

Go to: www.ccfcmec.org/ASHsatellite09

Once registered online, please do not mail or fax in a registration form.

CCF main campus, family health center, and CCHA community hospital employees should register at the above web address.

**PRE-REGISTRATION IS RECOMMENDED;
HOWEVER, ON-SITE REGISTRATION WILL BE ACCEPTED IF SPACE IS AVAILABLE.
REGISTRATION IS REQUESTED BY DECEMBER 1, 2009.**

Complete the information below if registering by mail or fax.

Please Print

Last Name: _____ First Name: _____

Degree: _____ Specialty: _____

Office/Organization: _____

Preferred Mailing Address: _____

City: _____ State: _____

Country: _____ Phone: _____

Email: _____

Practice Type: Office Based Hospital Staff Resident/Fellow

Mailing Address: The Cleveland Clinic Educational Foundation
P.O. Box 931653
Cleveland, OH 44193-1082

Local: 216-448-0770
Toll Free: 800-238-6750
Fax: 216-448-0783

For additional information, email: cmeregistration@ccf.org