

# ASH Review



Thursday,  
January 21, 2010  
InterContinental Hotel  
& Bank of America  
Conference Center  
9801 Carnegie Avenue  
Cleveland, Ohio

## About the Course

This course will provide hematologists, medical oncologists, radiation oncologists and nurses with current data and information on topics presented at the American Society of Hematology 51st Annual Meeting in New Orleans, on December 5-8, 2009.

## Learning Objectives

- Describe the implications for new diagnostic and therapeutic approaches to hematologic diseases.
- Discuss the impact of research and new treatments on patient management.

## Program Location

The course will take place at the InterContinental Hotel & Bank of America Conference Center, 9801 Carnegie Avenue, Cleveland, Ohio.

Parking is available in the visitor's garage located at the corner of Carnegie Avenue and E 100th Street. Take the skyway to the InterContinental Hotel & Bank of America Conference Center. Be certain to bring your parking ticket to the registration desk for validation (self-park only).

## Accreditation

The Cleveland Clinic Foundation Center for Continuing Education is accredited by the Accreditation Council for Continuing Medical Education to provide continuing medical education for physicians.

The Cleveland Clinic Foundation Center for Continuing Education designates this educational activity for a maximum of 5.25 *AMA PRA Category 1 Credits™*. Physicians should only claim credit commensurate with the extent of their participation in the activity.

Participants claiming CME credit from this activity may submit the credit hours to the American Osteopathic Association Council for Continuing Medical Education credit for Category 2 credit.

The Ohio Board of Nursing will accept at face value the number of contact hours awarded for an educational activity that has been approved for CE by a nationally accredited system of CE approval. Therefore the 5.25 physician *AMA PRA Category 1 Credits™* will be accepted for nursing credits. Nurses from other states should contact their State Board of Nursing.

## Faculty Disclosure

The Cleveland Clinic Foundation Center for Continuing Education has implemented a policy to comply with the current Accreditation Council for Continuing Medical Education Standards for Commercial Support requiring resolution of all faculty conflicts of interest. Faculty declaring a relevant commercial interest will be identified in the activity syllabus.

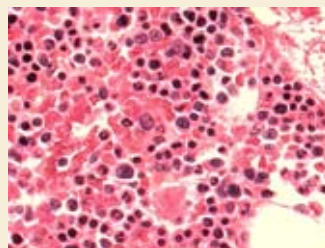
## Course Co-Directors

### Matt Kalaycio MD

Department of Hematologic Oncology and Blood Disorders  
Cleveland Clinic  
Member, Case Comprehensive Cancer Center

### Keith McCrae MD

Division of Hematology/Oncology  
University Hospitals Case Medical Center  
Member, Case Comprehensive Cancer Center



## Guest Faculty

### Irene Ghobrial, MD

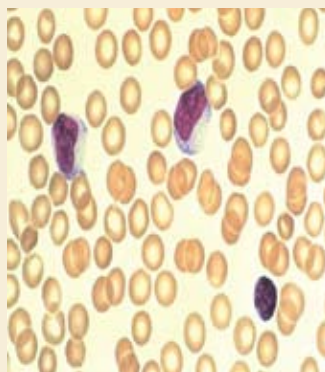
Dana Farber Cancer Institute  
Boston, MA

### Martin Tallman, MD

Robert H Lurie Comprehensive Cancer Center  
Northwestern University  
Chicago, IL

### Darrell Triulzi, MD

University of Pittsburgh School of Medicine  
Pittsburgh, PA



## Case Comprehensive Cancer Center Faculty

### Paul Barr, MD

University Hospitals Case Medical Center

### Stanton Gerson, MD

University Hospitals Case Medical Center

### Huda Salmon, MD

University Hospitals Case Medical Center

### Alvin Schmaier, MD

University Hospitals Case Medical Center

## Commercial Support

The Cleveland Clinic Foundation Center for Continuing Education and the Case Comprehensive Cancer Center acknowledge grants for partial support of this activity from:

**Allos**

**Celgene Corporation**

**Centocor Ortho Biotech Services LLC**

**Cephalon**

**Genentech**

**Millennium**

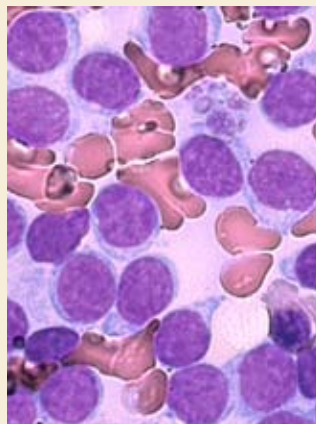
## Agenda

January 21, 2010

InterContinental Hotel & Bank of America  
Conference Center

8:00 Registration/Continental Breakfast

8:30 Welcome  
Stanton Gerson, MD



### MALIGNANT HEMATOLOGY

8:40 Introduction/ASH Highlights – Matt Kalaycio, MD

8:45 Acute Leukemia – Martin Tallman, MD

9:15 Chronic Leukemia – Matt Kalaycio, MD

9:45 Stem Cell Transplant – Huda Salmon, MD

10:15 Break

10:30 Lymphoma – Paul Barr, MD

11:00 Myeloma – Irene Ghobrial, MD

11:45 Lunch

### NON-MALIGNANT HEMATOLOGY

1:00 Introduction/ASH Highlights – Keith McCrae, MD

1:05 Cell Transfusion/Aged Red Cells – Darrell Triulzi, MD

1:35 Thrombosis and New Anticoagulants – Alvin Schmaier, MD

2:05 Break

2:20 Anemias – TBD

2:50 Update on Thrombocytopenias – Keith McCrae, MD

3:20 Questions and Answers

3:30 Adjourn

Time for questions and answers are included in each presentation.

## Registration Form

Cleveland Clinic  
Over 75 Years of Excellence in  
CONTINUING MEDICAL EDUCATION

### ASH Review

Course #020634

January 21, 2010

InterContinental Hotel & Bank of America Conference Center

Mail completed registration form to:

Sheryl Krall  
Cleveland Clinic Taussig Cancer Institute  
9500 Euclid Ave. R-26  
Cleveland, OH 44195

To expedite your registration, you may fax it to: 216-636-1396.

Once registration is faxed, please do not send original. There is no registration fee, however registration is required.

Registration includes syllabus, CME credit, lunch, and refreshment breaks.

PLEASE TYPE OR PRINT CLEARLY

Name (First, Last) \_\_\_\_\_ Degree \_\_\_\_\_

Address \_\_\_\_\_  Home  Business

City \_\_\_\_\_ State \_\_\_\_\_ Zip \_\_\_\_\_

( \_\_\_\_\_ ) \_\_\_\_\_ ( \_\_\_\_\_ ) \_\_\_\_\_  
Office Phone \_\_\_\_\_ Fax \_\_\_\_\_

Email \_\_\_\_\_

Area of Specialization: (check one)

Hematology  Medical Oncology  Radiation Oncology  
 Other (specify) \_\_\_\_\_

I am a resident/fellow

To register after January 15, 2010, please call the Taussig Cancer Institute Education office, 216-444-7940.

### Americans with Disabilities Act

The Cleveland Clinic Foundation Center for Continuing Education fully intends to comply with the legal requirements of the Americans with Disabilities Act. If you need assistance, please notify Cleveland Clinic at 216-444-7924 at least two weeks prior to the activity.

# ASH Review

Thursday,  
January 21, 2010

InterContinental Hotel  
& Bank of America  
Conference Center  
9801 Carnegie Avenue  
Cleveland, Ohio



**CASE COMPREHENSIVE CANCER CENTER**

A Comprehensive Cancer Center Designated by the National Cancer Institute

The Case Comprehensive Cancer Center (Case CCC) is a partnership of the Case Western Reserve University School of Medicine, the Ireland Cancer Center of University Hospitals Case Medical Center of Cleveland and the Taussig Cancer Institute of the Cleveland Clinic. Through the collaborative research activities of the partner institutions, the Case CCC pursues its mission of translating research discoveries into improved treatments for cancer patients throughout the region and the nation.



Taussig Cancer Institute - R26  
9500 Euclid Avenue  
Cleveland, OH 44195