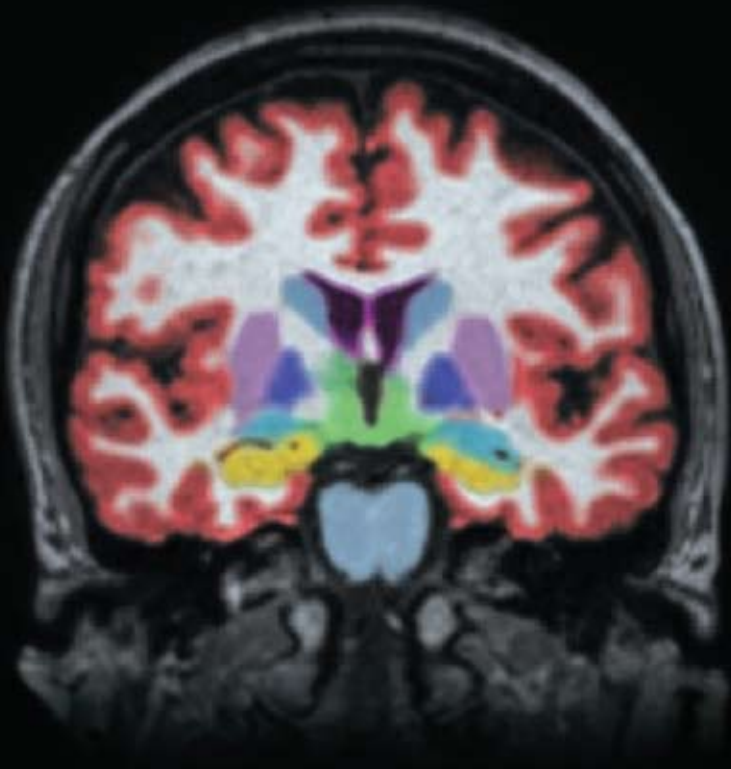
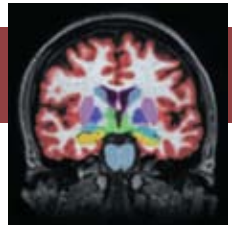


# 2010 Neurology Update – A Comprehensive Review for the Clinician

August 6-8, 2010  
The Ritz-Carlton, Washington DC



# Welcome



## About the Course

Neurological disorders span the range of disease from Alzheimer's disease to Wernicke's encephalopathy and beyond. In the past 10 years, since the *Decade of the Brain*, there has been an explosion of basic and clinical understanding of neurological diseases. In addition there have been many therapeutic breakthroughs. As the population ages, more patients are developing disorders such as stroke, dementia, Parkinson's disease and the like. The need to treat and manage these disorders will only increase in the future. This comprehensive course will review the most significant aspects of this expanding field, focusing on conditions and treatments that impact the growing affected population.

Our primary approach will be to provide a comprehensive analysis of the key neurological disorders that general neurologists, internists and family physicians may encounter in their patients. The focus will be on a case-based paradigm for instruction using the Audience Response System (ARS) format. We will also concentrate on the highest level of evidence to support treatment recommendations and an explicit statement of evidence using AAN Levels of Evidence. In addition, participants are invited to submit interesting or challenging cases to be discussed during the luncheon sessions with Cleveland Clinic staff neurologists. This will allow more one-on-one interaction with course faculty.

Please join us in the beautiful, recently renovated, The Ritz-Carlton, Washington DC, for a power-packed course. We'll see you there!

**Jinny Tavee, MD**  
Course Co-Director

**Alex Rae-Grant, MD**  
Course Co-Director

## Case Submission for Roundtable Discussions

If you are interested in submitting a case of a patient with a complex neurological disorder for the roundtable discussion during the luncheons, please email your case to Jinny Tavee at [taveej2@ccf.org](mailto:taveej2@ccf.org) by July 2, 2010.

## Target Audience

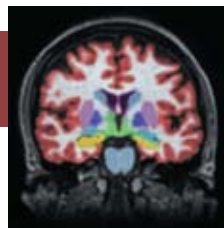
This course is directed to neurologists, internists and family practice physicians, physician assistants, nurses and others involved in the diagnosis and treatment of neurological disorders.

## Objectives

Upon completion of this course, the participant will be able to:

- Discuss newest advances in the diagnosis and treatment of common neurological diseases, including headache, dementia, brain tumors, and neuropathy
- Treat acute stroke and identify secondary prevention strategies
- Recognize clinical phenomenology of various movement disorders, neuro-ophthalmological abnormalities, and sleep disorders
- Manage seizures in the general and special populations
- Identify and treat various demyelinating disorders and discern from multiple sclerosis
- Recognize and manage autonomic dysfunction
- Discuss diagnostic and therapeutic strategies for unusual presentations of neurological disorders
- Evaluate and treat the patient with dizziness

# Faculty



## Cleveland Clinic Course Co-Directors

### **Jinny Tavee, MD**

Staff, Neuromuscular Center

### **Alex Rae-Grant, MD**

Staff, Mellen Center for Multiple Sclerosis Treatment and Research

## Cleveland Clinic Faculty

### **Anwar Ahmed, MD**

Staff, Center for Neurological Restoration

### **Nancy Foldvary-Schaefer, DO**

Director, Sleep Disorders Center

### **Jim Gebel, MD**

Consultant Staff, Cerebrovascular Center

### **Stephen E. Jones, MD, PhD**

Staff, Division of Neuroradiology  
Imaging Institute

### **Irene Katzan, MD, MS**

Director, Enterprise Stroke Systems, Center  
for Outcomes Research and Evaluation  
Cerebrovascular Center

### **Greg Kosmorsky, DO**

Staff, Ophthalmology  
Cole Eye Institute

### **Jennifer Kriegler, MD**

Staff, Neurological Center for Pain

### **Kerry Levin, MD**

Department Chair, Neurology  
Director, Neuromuscular Center

### **Carlos L. Rodriguez, MD**

Program Director, Sleep Medicine Fellowship

### **Richard Rudick, MD**

Vice Chair, Research & Development  
Neurological Institute  
Director, Mellen Center for Multiple  
Sclerosis Treatment and Research

### **Randy Schiffer, MD**

Director, Cleveland Clinic Lou Ruvo Center  
for Brain Health  
Las Vegas, NV

### **Robert Shields, MD**

Co-Director, Center for Syncope and  
Autonomic Disorders

### **Norman So, MD**

Staff, Epilepsy Center

### **Glen Stevens, DO, PhD**

Section Head, Adult Neuro-Oncology  
Brain Tumor and Neuro-Oncology Center

### **Patrick Sweeney, MD**

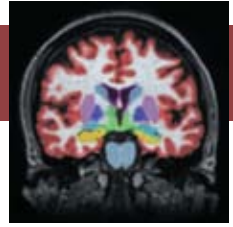
Staff, Neurology

### **Judith White, MD, PhD**

Section Head, Vestibular and Balance  
Disorders  
Head and Neck Institute  
Staff, Neurology



# Agenda



## Friday, August 6, 2010

5 minutes for Q & A is included in each presentation.

- 7:15 am           **Registration/Continental Breakfast/Exhibits**  
Salon III Prefunction
- 8:15 am           **Introduction**  
*Alex Rae-Grant, Jinny Tavee*
- 8:30 am           **Acute Stroke: Current Treatment and the Horizon**  
*Jim Gebel*
- 9:15 am           **Primary and Secondary Stroke Prevention**  
*Irene Katzan*
- 10:00 am          **Refreshment Break & Exhibits**
- 10:15 am          **Alzheimer's Dementia**  
*Randy Schiffer*
- 10:45 am          **When It's Not Alzheimer's**  
*Randy Schiffer*
- 11:15 am          **Brain Tumors and Paraneoplastic Syndromes**  
*Glen Stevens*
- 12:00 pm          **Lunch: Roundtable and Case Presentations (12:15-1:15)**
- 1:15 pm           **Case Studies: What's MS, and What's Not**  
*Alex Rae-Grant*
- 2:00 pm           **Treatment of MS and Devics Disease**  
*Richard Rudick*
- 2:45 pm           **Refreshment Break & Exhibits**
- 3:00 pm           **Neuroradiology Pearls**  
*Stephen E. Jones*
- 3:30 pm           **Adjourn**

## Saturday, August 7, 2010

5 minutes for Q & A is included in each presentation.

- 7:30 am           **Registration/Continental Breakfast/Exhibits**  
Salon III Prefunction
- 8:30 am           **The First and Last Seizure**  
*Norman So*
- 9:15 am           **Women and Epilepsy**  
*Nancy Foldvary-Schaefer*
- 9:45 am           **Localization and Treatment of Diplopia**  
*Greg Kosmorsky*
- 10:15 am          **Refreshment Break & Exhibits**

# Agenda



## Saturday, August 7, 2010 *(continued)*

- 10:30 am **Approach to the Dizzy Patient**  
*Judith White*
- 11:00 am **Advances in Sleep Medicine**  
*Nancy Foldvary-Schaefer*
- 11:30 am **A Review of Selected Sleep Disorders using Video Polysomnography**  
*Carlos L. Rodriguez*
- 12:00 pm **Lunch: Roundtable and Case Presentations (12:15-1:15)**
- 1:15 pm **Can't Miss or Unusual Movement Disorders**  
*Anwar Ahmed*
- 2:00 pm **An Overview of Parkinson's Disease: 2010**  
*Patrick Sweeney*
- 2:45 pm **Refreshment Break & Exhibits**
- 3:00 pm **Tremor**  
*Anwar Ahmed*
- 3:30 pm **Adjourn**

## Sunday, August 8, 2010

*5 minutes for Q & A is included in each presentation.*

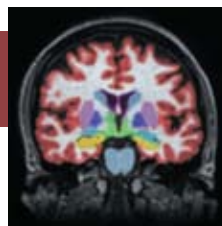
- 7:30 am **Registration/Continental Breakfast/Exhibits**  
Salon III Prefunction
- 8:30 am **Update in Polyneuropathy**  
*Jinny Tavee*
- 9:00 am **Guillain Barré Syndrome Mimics**  
*Kerry Levin*
- 9:30 am **Neurogenic Orthostatic Hypotension**  
*Robert Shields*
- 10:00 am **Refreshment Break & Exhibits**
- 10:15 am **Prevention and Treatment of Migraine**  
*Jennifer Kriegler*
- 10:45 am **Approach to the Chronic Daily Headache**  
*Jennifer Kriegler*
- 11:15 am **Integrative Holistic Treatments in Neurology**  
*Jinny Tavee*
- 11:45 am **Question & Answer/Evaluation**
- 12:00 pm **Adjourn**

### Tai-Chi Class

Jinny Tavee will lead a Tai-Chi class from 7:00-7:30 am on Saturday and Sunday.

The ancient art of tai chi uses gentle flowing movements to reduce stress and offers other health benefits. Treat your whole body to a gentle and relaxing workout. You will feel refreshed and energized! Please sign up for this complimentary class when you register. Course attendees and guests are welcome.

# General Information



## Location

The Ritz-Carlton, Washington DC  
1150 22nd Street, NW  
Washington, DC 20037  
Phone: 202-835-0500

## Hotel Accommodations

A block of rooms has been reserved at The Ritz-Carlton, Washington DC. To make your reservation, contact the hotel directly at 1-800-241-3333 and mention the “Cleveland Clinic Neurological Update” to receive the special rate of \$199 per night plus tax. You may also make your reservation online at [www.ritzcarlton.com](http://www.ritzcarlton.com) using code CCLCCLA. To secure the course rate, you must make your reservation by Monday, July 12, 2010.

The Ritz-Carlton is:

- 40 minutes east of Dulles International Airport
- 10 minutes (4.2 miles) north of Ronald Reagan Washington National Airport
- 10 minutes from the White House, the Smithsonian museums and many other historic sites

## Information

For further information about this activity, contact Brigid Ring at  
Phone: 216-445-0754 or 800-223-2273 x50754  
Email: [ringb@ccf.org](mailto:ringb@ccf.org)

## Registration and Cancellation

Register at [www.ccfme.org/NeuroUpdate10](http://www.ccfme.org/NeuroUpdate10). Registration deadline is **5:00 pm (EST), Monday, August 2, 2010**. A request for a refund must be received in writing by July 19, 2010. No refunds will be given after July 19, but registration is transferable for this course only through August 8, 2010. A \$50 cancellation fee will be deducted from the refund for all cancellations.

If you register by mail, please allow up to three weeks for your registration to be processed.

For questions about registration call 216-448-0777 or email [cmeregistration@ccf.org](mailto:cmeregistration@ccf.org).

## Accreditation

The Cleveland Clinic Foundation Center for Continuing Education is accredited by the Accreditation Council for Continuing Medical Education to provide continuing medical education for physicians.

The Cleveland Clinic Foundation Center for Continuing Education designates this educational activity for a maximum of 16 *AMA PRA Category 1 Credits*<sup>™</sup>. Physicians should only claim credit commensurate with the extent of their participation in the activity.

Participants claiming CME credit from this activity may submit the credit hours to the American Osteopathic Association Council on Continuing Medical Education for Category 2 credit.

Application for CME credit has been filed with the American Academy of Family Physicians. Determination of credit is pending.

## Faculty Disclosure Statement

The Cleveland Clinic Foundation Center for Continuing Education has implemented a policy to comply with the current Accreditation Council for Continuing Medical Education Standards for Commercial Support requiring resolution of all faculty conflicts of interest. Faculty declaring a relevant commercial interest will be identified in the activity syllabus.

## Americans with Disabilities Act

The Cleveland Clinic Foundation Center for Continuing Education fully intends to comply with the legal requirements of the Americans with Disabilities Act. If you need assistance, please notify Brigid Ring at 216-445-0754 or [ringb@ccf.org](mailto:ringb@ccf.org) at least two weeks prior to the activity.

# Registration Form

Course 020639 • Office Use Only

Fee \_\_\_\_\_ Date \_\_\_\_\_

M.O.P. \_\_\_\_\_ CXL/Fee \_\_\_\_\_

## 2010 Neurology Update – A Comprehensive Review for the Clinician

August 6-8, 2010

The Ritz-Carlton, Washington DC

Complete the information below if registering by mail or fax:

PLEASE PRINT

First Name \_\_\_\_\_ MI \_\_\_\_\_ Last Name \_\_\_\_\_ Degree \_\_\_\_\_

Address \_\_\_\_\_

City \_\_\_\_\_ State \_\_\_\_\_ Zip \_\_\_\_\_

Phone \_\_\_\_\_ Fax \_\_\_\_\_

Specialty \_\_\_\_\_ E-Mail \_\_\_\_\_

Payment must be received prior to admittance to the course. Purchase orders are not accepted.

**Go to: [www.ccfcm.org/NeuroUpdate10](http://www.ccfcm.org/NeuroUpdate10)**

Once you register online, please do not mail or fax in a registration form.

**CCF main campus, family health centers, and CCHS community hospital employees (physicians and non-physicians) should register online at the above web address.**

### COURSE FEES

Includes syllabus, continental breakfast, refreshment breaks and two luncheons

- Physician \$425.00
- Nurse/Physician Assistant \$395.00
- Allied Health Professional/Other \$395.00
- Compicare Affiliate Member ID# \_\_\_\_\_ \$276.25
- Cleveland Clinic Alumnus \$395.00
- Resident\*/Fellow\* \$395.00

\*Letter from Program Director or Chairman must be received in our office prior to the course to receive this fee.

I require a vegetarian lunch

**Tai-Chi Class Sign-Up – 7:00 a.m.** Saturday  I will attend. Number of guests attending \_\_\_\_\_

Sunday  I will attend. Number of guests attending \_\_\_\_\_

**Total amount enclosed or to be charged:** \$ \_\_\_\_\_

### PAYMENT

Make check payable to: The Cleveland Clinic Educational Foundation

or charge the following account:  Visa  MasterCard  American Express  Discover

Card Number \_\_\_\_\_ Exp. Date \_\_\_\_\_

Signature (not valid without signature)

4 Digit V-Code, on back of card

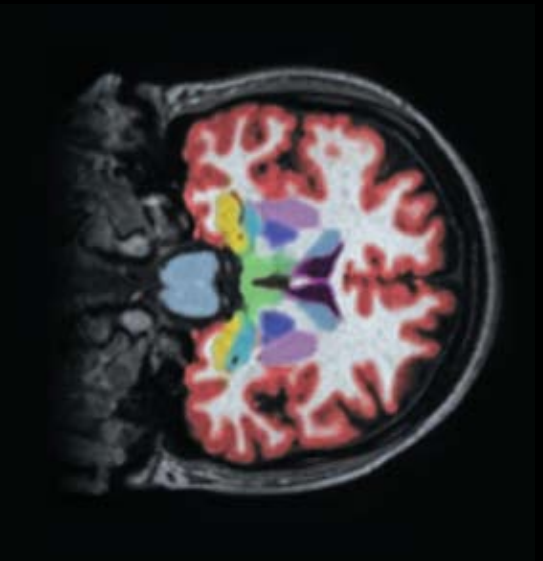
**If you are unable to register online, FAX your registration to 216-448-0783.**

**If paying by check, registration should be payable and MAILED to:**

The Cleveland Clinic Educational Foundation  
P.O. Box 931653 • Cleveland, OH 44193-1082



# 2010 Neurology Update – A Comprehensive Review for the Clinician



August 6-8, 2010  
The Ritz-Carlton, Washington DC



The Cleveland Clinic Foundation  
Neurological Institute  
9500 Euclid Ave., J136  
Cleveland, OH 44195

Cleveland Clinic  
Over 75 Years of Excellence in  
CONTINUING MEDICAL EDUCATION