

Registration

23rd Annual

ASH Review

Friday, January 19, 2024

InterContinental Hotel and Conference Center
9801 Carnegie Avenue
Cleveland Ohio

Course includes syllabus, continental breakfast, lunch, and breaks.

Register online at: www.ccfme.org/2024ASHReview

Seating is Limited!

Physician	No Charge
Resident/Fellow	No Charge
Non-Physician	No Charge
Industry	\$200

Deadline for Registration

Register at www.ccfme.org/2024ASHReview

The deadline for registration is 5:00 pm (EST), Tuesday, January 17, 2024.

For questions about registrations, please call 216.448.8710 or email cmeregistration@ccf.org

Requests for refunds must be received in writing. A full refund will be given if received by January 13, 2024. After January 13, 2024, a \$50 cancellation fee will be deducted. No refunds will be issued after January 18, 2024.

Questions about the program? Contact the Taussig Cancer Institute professional education office at 216.444.7924.

Americans with Disabilities Act

The Cleveland Clinic Foundation Center for Continuing Education fully intends to comply with the legal requirements of the Americans Disabilities Act. If you need assistance, please notify Cleveland Clinic at 216.444.7924 at least two weeks prior to the activity.



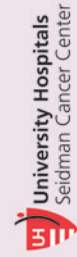
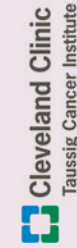
The Cleveland Clinic Foundation
Taussig Cancer Institute - CA50
9500 Euclid Avenue
Cleveland, OH 44195

23rd Annual

ASH Review

Friday, January 19, 2024

InterContinental Hotel and Conference Center
9801 Carnegie Avenue
Cleveland Ohio 44106

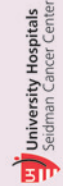
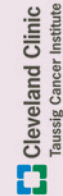


23rd Annual

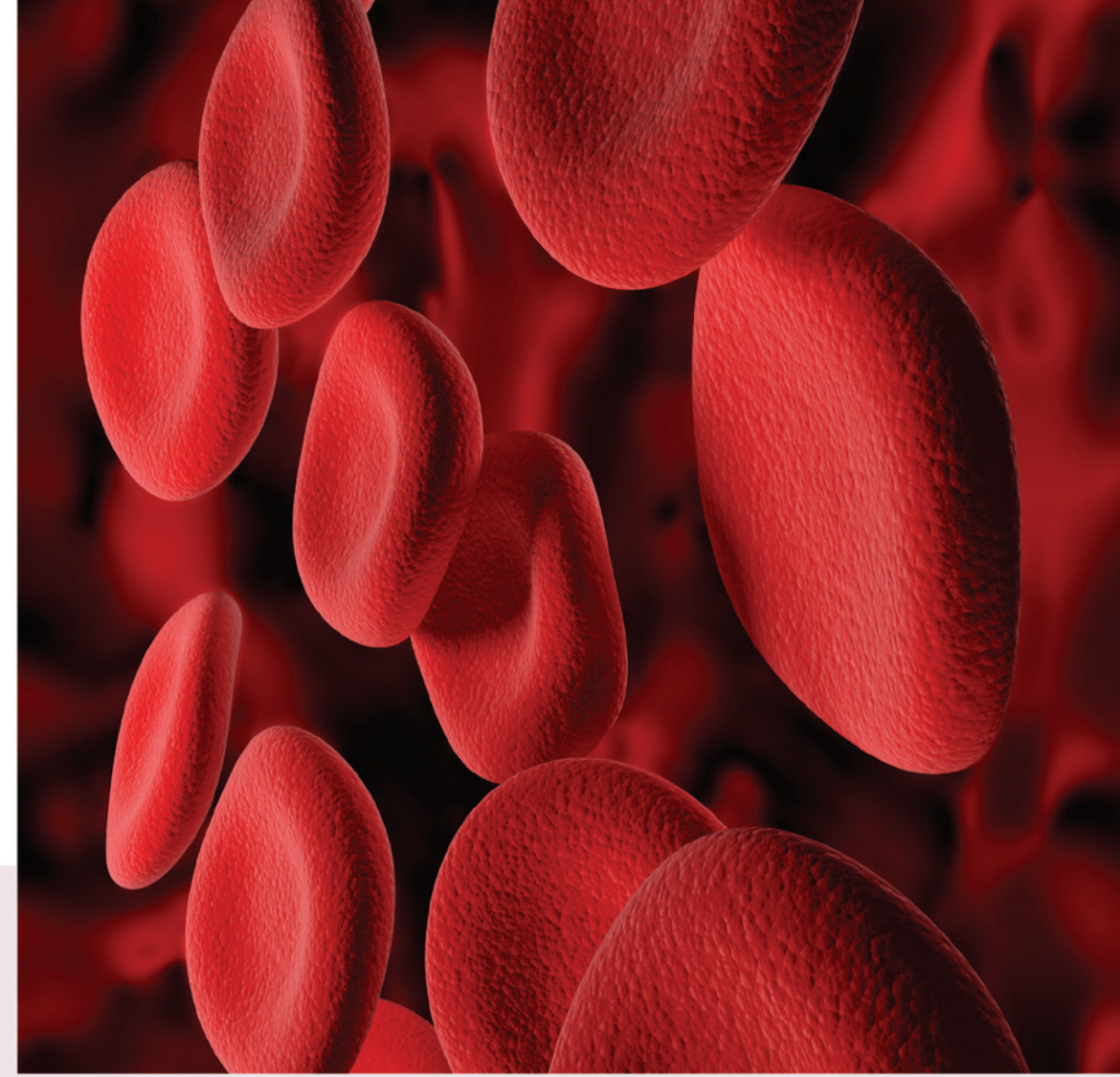
ASH Review

Friday, January 19, 2024

InterContinental Hotel and
Conference Center
9801 Carnegie Avenue
Cleveland Ohio



www.ccfme.org/2024ASHReview



About the Course

This course will provide hematologists, medical oncologists, radiation oncologists and nurses with current data and information on topics presented at the American Society of Hematology 65th Annual Meeting in San Diego on December 9-12, 2023.

Learning Objectives

- Describe the implications for new diagnostic and therapeutic approaches to hematologic diseases.
- Discuss the impact of research and new treatments on patient management.
- Review evidence-based approaches to management of common hematologic disorders.

Program Location

InterContinental Hotel and Conference Center
9801 Carnegie Avenue
Cleveland, Ohio 44106
Phone: 877.707.8999

Accreditation

In support of improving patient care, Cleveland Clinic Center for Continuing Education is jointly accredited by the Accreditation Council for Continuing Medical Education (ACCME), the Accreditation Council for Pharmacy Education (ACPE), and the American Nurses Credentialing Center (ANCC), to provide continuing education for the healthcare team.

CREDIT DESIGNATION

American Medical Association (AMA)

Cleveland Clinic Foundation Center for Continuing Education designates this live activity for a maximum of 6.25 AMA PRA Category 1 Credits™. Physicians should claim only the credit commensurate with the extent of their participation in the activity.

Participants claiming CME credit from this activity may submit the credit hours to the American Osteopathic Association for Category 2 credit.

Certificate of Participation

A certificate of participation will be provided to other health care professionals for requesting credits in accordance with their professional boards and/or associations.

Faculty Disclosure

The Cleveland Clinic Foundation Center for Continuing Education has implemented a policy to comply with the current Accreditation Council for Continuing Medical Education Standards for Commercial Support requiring resolution of all faculty conflicts of interest. Faculty declaring a relevant commercial interest will be identified in the activity syllabus.

Course Co-Directors

Hillard Lazarus, MD

Department of Medicine
Case Western Reserve
University School of Medicine
Cleveland, OH

Keith McCrae, MD

Department of Hematology / Oncology
Cleveland Clinic

Guest Faculty

Beth Battinelli, MD, PhD

Division of Hematology
Massachusetts General Hospital
Harvard School of Medicine
Boston, MA

Gloria Gerber, MD

Division of Hematology
Johns Hopkins School of Medicine
Baltimore, MD

Ashley Rosko, MD

The James Cancer Hospital and
Solove Research Institute
The Ohio State University
Columbus, OH

Cleveland Faculty

Anne Hubben, MD

Cleveland Clinic

Deepa Jagadeesh, MD

Cleveland Clinic

Jack Khouri, MD

Cleveland Clinic

Rebecca Klisovic, MD

University Hospitals Cleveland
Medical Center

Lalitha Nayak, MD

University Hospitals Cleveland
Medical Center

Benjamin Tomlinson, MD

University Hospitals Cleveland
Medical Center

Allison Winter, MD

Cleveland Clinic

Agenda

January 19, 2024

InterContinental Hotel
and Conference Center

8:00 am **Registration**

8:30 am **Welcome**

BENIGN HEMATOLOGY

8:35 am **Introduction/ ASH Highlights** – Keith McCrae, MD

8:45 am **Thrombosis** – Gloria Gerber, MD (Johns Hopkins)

9:15 am **Platelets** – Anne Hubben, MD

9:45 am **Coagulation Laboratory** – Elizabeth Battinelli, MD (Massachusetts Gen Hosp)

10:15 am **Break**

10:30 am **Bleeding Disorders** – Lalitha Nayak, MD

MALIGNANT HEMATOLOGY

11:00 am **Introduction/ ASH Highlights** – Hillard M. Lazarus, MD

11:05 am **Acute Progranulocytic Leukemia** – Ben Tomlinson, MD

11:40 am **Lunch – Geriatrics** – Ashley Rosko, MD (Ohio State University)

12:45 pm **Break / Dessert**

1:00 pm **Hodgkin Lymphoma** – Deepa Jagadeesh, MD

1:35 pm **Plasma Cell Dyscrasias** – Jack Khouri, MD

2:05 pm **Break**

2:20 pm **Myeloproliferative Neoplasms** – Rebecca Klisovic, MD

2:50 pm **Chronic Lymphocytic Leukemia** – Allison Winter, MD

3:20 pm **Questions and Answers**

3:30 pm **Adjourn**

Time for questions and answers are included in each presentation.

