



**Cleveland Clinic**

Robert J. Tomsich Pathology &  
Laboratory Medicine Institute

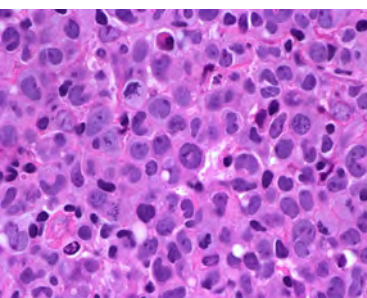
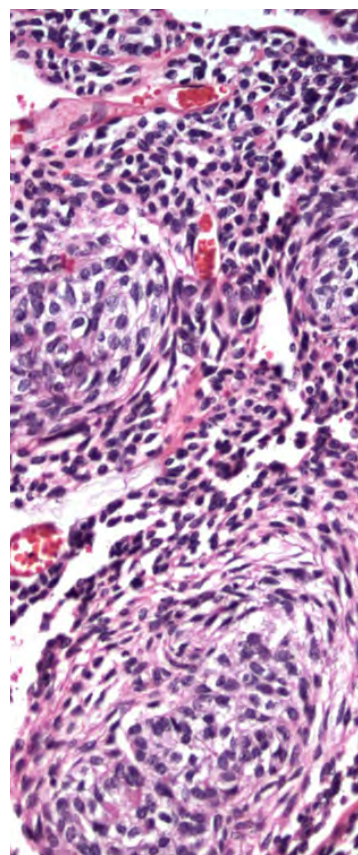
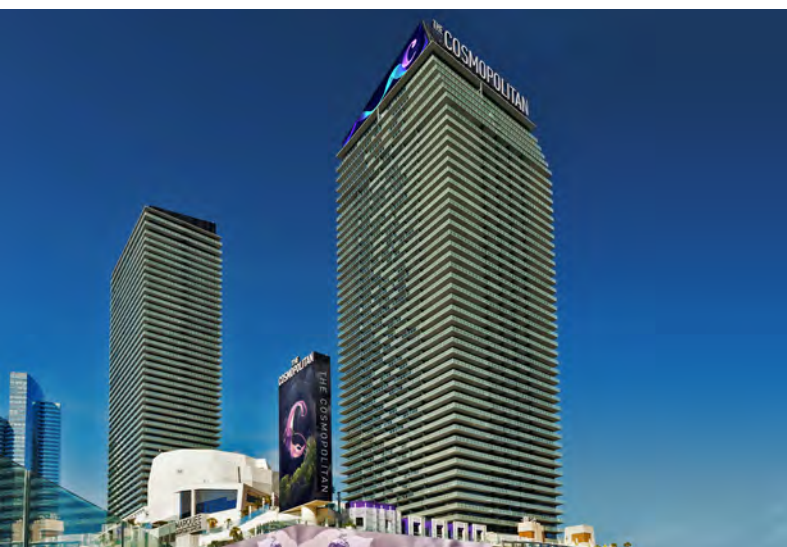
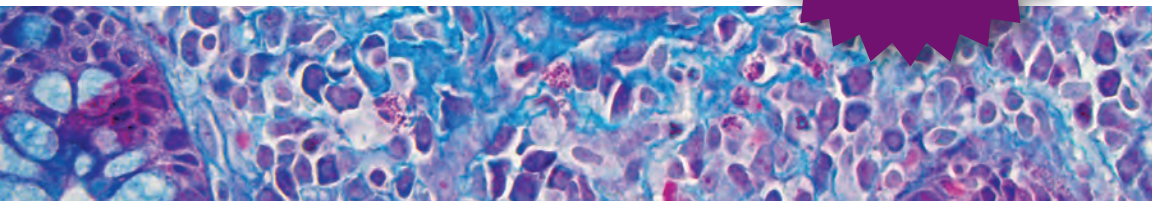
Cleveland Clinic  
Laboratories

# Cleveland Clinic Multispecialty Pathology Symposium

**January 19-21, 2018**

The Cosmopolitan of Las Vegas  
Las Vegas, NV

**SAMs  
credit  
available**



Register today at [www.ccfcmc.org/18pathology](http://www.ccfcmc.org/18pathology)

Join us at...

## Cleveland Clinic Multispecialty Pathology

Attend the symposium that will focus on practical discussions of commonly encountered dilemmas in surgical pathology, hematopathology, and cytology. The goal is to provide evidence-based guidance on the diagnosis and management of challenging cases in esophageal disease, inflammatory bowel disease, colorectal polyps, prostate and bladder lesions, lymphomas, ovarian and pelvic masses, gynecological cytology, and breast lesions. Practicing pathologists, fellows, and residents who attend will maintain, develop, and increase their knowledge, competence, and professional performance with the intent to improve patient care and reduce disease impact.



### Who Should Attend?

Pathologists, Pathology Residents and Fellows

### By Attending, You Will Be Able To:

- Describe the pathologic characteristics, histology, and microphysiology that may indicate Barrett's-related dysplasia and unusual patterns of ulcerative colitis.
- Review relevant updates and new genitourinary entities included in WHO 2016.
- Recognize and diagnose variants of prostate cancer, prostate cancer mimics, and uncommon urinary bladder lesions.
- List key morphologic features and apply current diagnostic criteria to lobular and spindle cell lesions of the breast.
- Describe histologic features of small B-cell, high grade B-cell, peripheral T-cell, and Hodgkin lymphomas.
- Discuss cytologic-histologic correlation of squamous and glandular gynecologic lesions.
- Recognize different patterns of ovarian neoplasms.

### Co-Directors



**John Goldblum, MD**

Chairman, Department of Pathology  
Pathology and Laboratory Medicine Institute  
Cleveland Clinic  
Cleveland, OH



**Cristina Magi-Galluzzi, MD, PhD**

Department of Anatomic Pathology  
Pathology and Laboratory Medicine Institute  
Cleveland Clinic  
Cleveland, OH

### Cleveland Clinic Department of Anatomic Pathology Faculty

**Fadi Abdul-Karim, MD, MEd**

**Erinn Downs-Kelly, DO**

**Eric Hsi, MD**

## Friday, January 19, 2018

7:00 am	Registration, Continental Breakfast, and Exhibits	12:00 pm	Question and Answer Period
8:00 am	Welcoming Remarks <i>Cristina Magi-Galluzzi, MD, PhD</i> <i>John Goldblum, MD</i>	12:15 pm	Lunch
<b>Gastrointestinal</b>		<b>Genitourinary</b>	
8:10 am	Controversies in the Diagnosis of Barrett's Esophagus and Barrett's-related Dysplasia <i>John Goldblum, MD</i>	1:15 pm	WHO 2016: What's New, True and Important in GU Pathology <i>Cristina Magi-Galluzzi, MD, PhD</i>
9:00 am	Inflammatory Bowel Disease and IBD-related Dysplasia: One Pathologist's Perspective <i>John Goldblum, MD</i>	2:00 pm	Problem Diagnoses on Prostate Biopsies and TURP <i>Cristina Magi-Galluzzi, MD, PhD</i>
9:45 am	Question and Answer Period	2:45 pm	Question and Answer Period
10:00 am	Refreshment Break and Exhibits	3:00 pm	Refreshment Break and Exhibits
<b>Hematopathology</b>		<b>Hematopathology</b>	
10:30 am	Small B-cell Lymphomas <i>Eric Hsi, MD</i>	3:30 pm	T-cell Lymphomas <i>Eric Hsi, MD</i>
11:15 am	Diffuse Aggressive B-cell Lymphomas <i>Eric Hsi, MD</i>	4:15 pm	Hodgkin Lymphoma <i>Eric Hsi, MD</i>
		5:00 pm	Question and Answer Period
		5:15 pm	Adjourn

---

## Saturday, January 20, 2018

7:15 am	Continental Breakfast and Exhibits	<b>Gastrointestinal</b>	
<b>Breast</b>		1:30 pm	Nomenclature of Colorectal Polyps: Controversies and Confusion <i>John Goldblum, MD</i>
8:00 am	All Things Lobular <i>Erinn Downs-Kelly, DO</i>	2:15 pm	An Approach to Mesenchymal Tumors of the GI Tract <i>John Goldblum, MD</i>
8:45 am	Spindle Cell Lesions of the Breast: From Benign to Malignant <i>Erinn Downs-Kelly, DO</i>	3:00 pm	Question and Answer Period
9:30 am	Question and Answer Period	3:15 pm	Refreshment Break and Exhibits
9:45 am	Refreshment Break and Exhibits	<b>Gynecology/Cytology</b>	
<b>Gynecology/Cytology</b>		3:45 pm	Intraoperative Evaluation of Ovarian and Pelvic Masses <i>Fadi Abdul-Karim, MD, MEd</i>
10:15 am	Histologic Correlation and Addressing Non-correlating Cytology-Biopsy – LEEP Specimens <i>Fadi Abdul-Karim, MD, MEd</i>	4:30 pm	Interactive Approach to Intraoperative Evaluation of Cases of Ovarian and Pelvic Masses <i>Fadi Abdul-Karim, MD, MEd</i>
11:00 am	Factors Influencing Non-correlation and Practical Work-up Approaches by Surgical Pathologists <i>Fadi Abdul-Karim, MD, MEd</i>	5:15 pm	Question and Answer Period
11:45 am	Question and Answer Period	5:30 pm	Adjourn
12:00 pm	Lunch – On Your Own		

## Sunday, January 21, 2018

7:15 am	Continental Breakfast and Exhibits	<b>Genitourinary</b>
<b>Breast</b>		10:15 am A Potpourri of Bladder and Renal Lesions <i>Cristina Magi-Galluzzi, MD, PhD</i>
8:00 am	Breast Cancer Staging: Issues and Updates <i>Erinn Downs-Kelly, DO</i>	11:00 am Grossing, Reporting and Staging of Renal Tumors <i>Cristina Magi-Galluzzi, MD, PhD</i>
8:45 am	HER2 Testing in Breast Cancer <i>Erinn Downs-Kelly, DO</i>	11:45 am Question and Answer Period
9:30 am	Question and Answer Period	12:00 pm Closing Remarks
9:45 am	Refreshment Break and Exhibits	12:15 pm Adjourn

## Register Online at [www.ccfme.org/18pathology](http://www.ccfme.org/18pathology)

### Fees

**Fee includes:** continental breakfasts, refreshment breaks, one lunch, faculty PowerPoint presentations in PDF format online and on flash drive

	Early Bird on or before 11/15/17	After 11/15/17
Physician	\$850	\$900
Resident*/Fellow*	\$350	\$400
Non Physician	\$350	\$400

\*Letter from program director is required to receive the discounted fee. If letter is not received two weeks prior to the activity, the full physician fee will be charged.

### Group Discount Available

Groups of 3 or more from the same office/institution will receive a \$100 discount off the full registration fee. Registrants must call 216.448.8710 to receive a promotional code for special pricing.

Visit [www.ccfme.org/18pathology](http://www.ccfme.org/18pathology) for complete registration information.

### Registration and Cancellation

Preregistrations are accepted until 2:00 pm ET January 17, 2018. Register on site after this date.

In case of cancellation, email notification is required to process your refund. A full refund will be issued if canceled by January 5, 2018. After January 5, 2018, a \$125 cancellation fee will be deducted from your refund. No refunds will be issued after January 12, 2018.

For questions about registration or cancellation, email us at [cmeregistration@ccf.org](mailto:cmeregistration@ccf.org) or call 216.448.8710.

*Cleveland Clinic Center for Continuing Education reserves the right to cancel or postpone an activity at our sole discretion. In the unlikely event that this occurs, any registration fee(s) paid will be refunded. Be advised that Cleveland Clinic is not responsible for related costs including airline tickets, hotel costs, or any similar fee penalties incurred as a result of any meeting cancellations or changes.*

## General Information

### Location

#### The Cosmopolitan of Las Vegas

3708 Las Vegas Boulevard South  
Las Vegas, NV 89109  
Phone: 702-698-7000

### Hotel Accommodations

A limited block of rooms has been reserved at the The Cosmopolitan of Las Vegas only until Wednesday, December 27, 2017 ET 5:00 pm for a special rate of \$289 plus tax.

A \$30 (discounted) resort fee per night will be applied to each guest room. This includes high speed internet access (in-room and public areas), 24 hour fitness center access, unlimited local, toll free and domestic long distance telephone calls (all 50 states) and tennis court access.

To make your reservations, call 855.435.0005 and reference group code SDCFJ8 or go to

[www.cfcme.org/pathologyhotel](http://www.cfcme.org/pathologyhotel)

### Parking

Valet Parking – \$18 per day

Self Parking – \$10 per day

### Information

For further information about this activity, contact the Cleveland Clinic Center for Continuing Education.

**Website:** [cfcme.org/18pathology](http://cfcme.org/18pathology)

Local: 216.444.9990

### Faculty Disclosure

The Cleveland Clinic Foundation Center for Continuing Education has implemented a policy to comply with the current Accreditation Council for Continuing Medical Education Standards for Commercial Support requiring resolution of all faculty conflicts of interest. Faculty declaring a relevant commercial interest will be identified in the activity syllabus.



### Accreditation

The Cleveland Clinic Foundation Center for Continuing Education is accredited by the Accreditation Council for Continuing Medical Education to provide continuing medical education for physicians.

The Cleveland Clinic Foundation Center for Continuing Education designates this live activity for a maximum of 18 AMA PRA Category 1 Credits™.

Physicians should claim only the credit commensurate with the extent of their participation in the activity.

Participants claiming CME credit from this activity may submit the credit hours to the American Osteopathic Association for Category 2 credit.

This activity is also approved by the American Board of Pathology for Self-Assessment Module Credits through the Pathology and Laboratory Medicine Institute of the Cleveland Clinic for 18 credits.

SAMs credit is only available for full course registration.

### Other Health Care Professionals

A certificate of attendance will be provided to other health care professionals for requesting credits in accordance with state nursing boards, specialty societies, or other professional associations.

### Americans with Disabilities Act

The Cleveland Clinic Foundation Center for Continuing Education fully intends to comply with the legal requirements of the Americans with Disabilities Act. If you need assistance, please notify us at least two weeks prior to the activity.



Robert J. Tomsich Pathology &  
Laboratory Medicine Institute

Cleveland Clinic  
Laboratories



**Cleveland Clinic**

The Cleveland Clinic Foundation  
9500 Euclid Avenue, TR204  
Cleveland, OH 44195

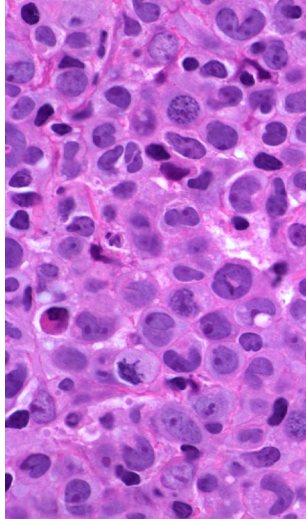
NON-PROFIT ORG.  
U.S. Postage Paid  
Cleveland, OH  
Permit No. 1918

# Cleveland Clinic Multispecialty Pathology Symposium

**January 19-21, 2018**

**The Cosmopolitan of Las Vegas  
Las Vegas, NV**

**SAMs  
credit  
available**



**Register today at [www.ccfcmcme.org/18pathology](http://www.ccfcmcme.org/18pathology)**