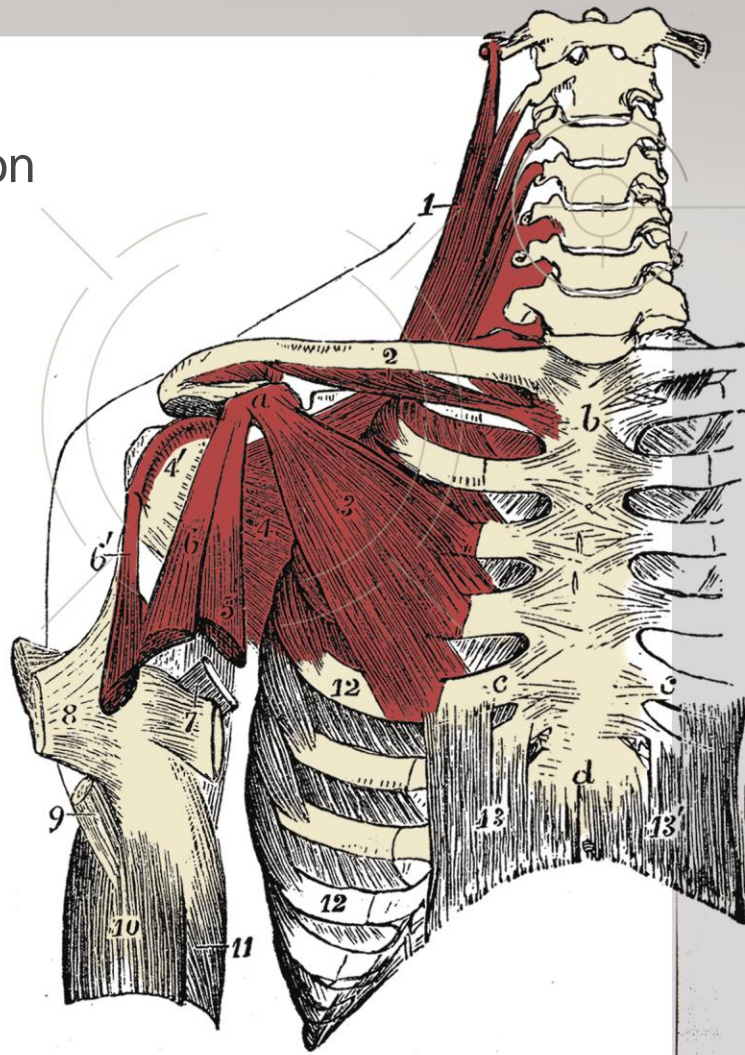


Please join us for a presentation on

Understanding Polymyalgia Rheumatica: Pathophysiology, Presentation, and Pain



SPEAKER

Leonard Calabrese, DO

R.J. Fasnemyer Chair of Clinical Immunology
Department of Rheumatologic and Immunologic Disease
Orthopaedic and Rheumatologic Institute,
Cleveland Clinic, Cleveland, OH



DATE & TIME

Friday, May 12th, 2023

11:45am -12:20pm ET



LOCATION

Founder's Ballroom

The InterContinental Hotel & Conference Center
9801 Carnegie Ave
Cleveland, OH 44106

Sanofi may not provide meals to certain persons at this speaker program. By accepting a meal at this program, you represent that none of these descriptions apply to you: (1) Minnesota licensed healthcare provider; (2) New Jersey prescriber (for in office programs); (3) Vermont licensed healthcare provider; (4) anyone prohibited from accepting things of value, such as the food or drink at this event, by other state or federal laws, or by his or her employer's policies. Sanofi thanks you for your understanding. In accordance with the PhRMA Code on Interactions with Healthcare Professionals, attendance at this program is limited to healthcare professionals. Accordingly, attendance by guests or spouses is not permitted.

This program is not CME accredited and may not be used for CME accreditation. *This program/event is developed and offered by Sanofi. This is not an official program/event of the Cleveland Clinic.*