



Endoscopic Submucosal Dissection/Endorobotics Symposium

November 7–8, 2025

Cleveland Clinic Main Campus | Cleveland, Ohio



Register today at ccfcme.org/ESDE2025

Don't miss this activity. Limited slots available!

Course Description/Overview

The Endoluminal Conference is a non-CME course created to introduce its participants to new organ sparing techniques in Endoscopic Dissection and Endoscopic Resection of the Upper and Lower GI tract in Endoluminal Surgery. This course includes 8 hours hands-on lab. The hands-on course will cover tissue resection and closure techniques specific to Endoscopic Dissection and Endoscopic Resection. We will also discuss pre-evaluation of patient records, follow-up care, pathological assessment, and proper billing in the course.

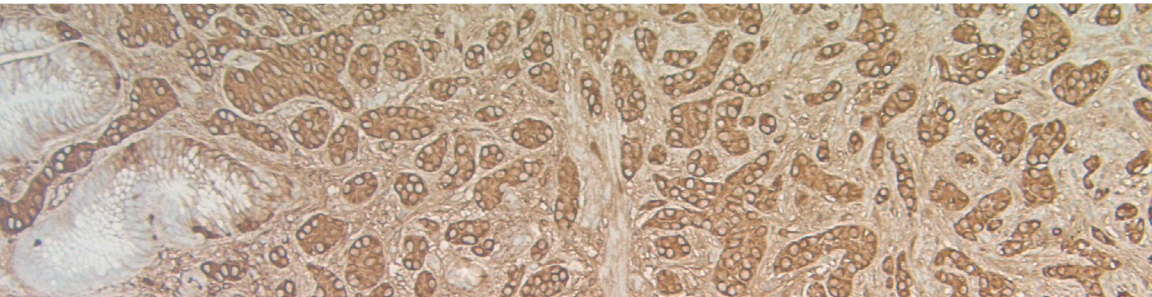
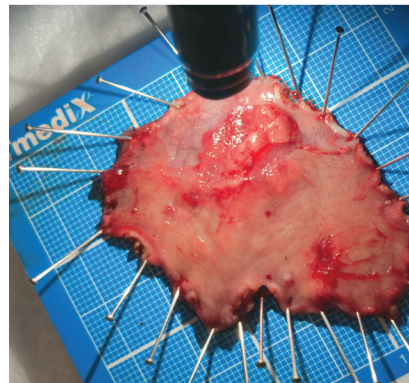
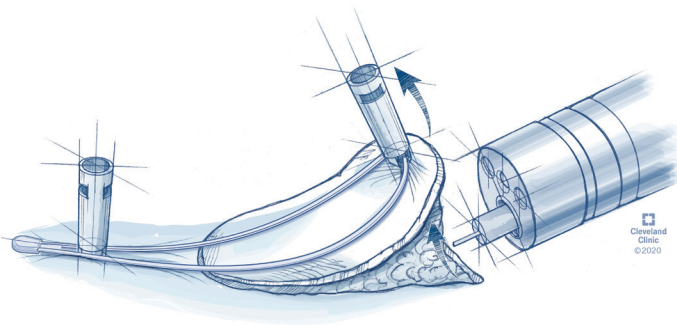
Who Should Attend?

This course is designed for healthcare providers who express interest in Endoscopic Dissection and Endoscopic Resection including gastroenterologists, general surgeons, advanced endoscopists, colorectal surgeons, trainees, nurses, and technicians. This activity strives to produce significant knowledge gains that will, in turn, have positive effects on improving the quality of care for patients. This course also helps provide physicians with a different organ sparing option to prolong patient life.

Learning Objectives

After completing this educational activity, the participant will be able to do the following:

- Demonstrate different tissue resection techniques such as ESD and EMR techniques.
- Identify new technology for ESD and retraction devices.
- Demonstrate how to utilize Endorobotics for resection and suturing.
- Demonstrate how to complete Post ESD management including defect closure and defect sealing.
- Demonstrate proper specimen handling once biopsies are taken from the ESD site.
- Demonstrate proper complication management and follow up care.



Faculty

Co-Activity Directors



Amit Bhatt, MD

Director of Endoscopic Submucosal Dissection
Co-Director of the Endoluminal Surgery Center,
Advanced Endoscopy Group
Digestive Disease Institute
Cleveland Clinic
Clinical Assistant Professor
Cleveland Clinic Lerner College of Medicine



Emre Gorgun, MD, MBA

Vice Chair, Department of Colorectal Surgery
Krause-Lieberman Chair in Laparoscopic
Colorectal Surgery
Co-Director of the Endoluminal Surgery
Center, Lower GI
Digestive Disease Institute, Cleveland Clinic
Clinical Assistant Professor,
Department of Surgery
Cleveland Clinic Lerner College of Medicine

Guest Faculty

Seiichiro Abe, MD, PhD

National Cancer Center Hospital, Tokyo, Japan

Hiroyuki Aihara, MD, PhD

Brigham & Women's Hospital

Austin Chiang, MD, MPH

Medtronic

Brian Dunkin, MD

Boston Scientific

Amyr Hajj, MA, MBChir, MSc, MD

King's College Hospital, London, England

Sang W. Lee, MD

Keck Medicine of USC

Venkatesh Munikrishnan, MRCS, FRCS, CCT

Apollo Hospitals, Chennai, India

Jennifer Paruch, MD

Ochsner Health

Richard Whelan, MD

Northwell Health

Dennis Yang, MD

AdventHealth

Cleveland Clinic Faculty

Daniela Allende, MD

Kyungran Justina Cho, MD, PhD

Leonardo Duraes, MD, PhD

Xiaoxi Feng, MD

Suneel Kamath, MD

Matthew Kroh, MD

Olga Lavryk, MD

Alberto Murino, MBBS

Cleveland Clinic London

Kanika Nair, MD

Siva Raja, MD

Madhu Sanaka, MD

Roberto Simons-Linares, MD

Joshua Sommovilla, MD

Monisha Sudarshan, MD

John Vargo, MD, MBA, MPH

Agenda

DAY 1

Friday, November 7, 2025

- 7:15 am **Registration, Continental Breakfast and Exhibits**
- 7:45 am **Welcome and Introductions**
Amit Bhatt, MD and
Emre Gorgun, MD, MBA
- 8:00 am **ESD of the colon and rectum: Any variances performed by GI or surgeons and future advancements**
Amyr Hajj, MA, MBBChir, MSc, MD
- 8:20 am **Techniques and approaches to gastric ESD from the East**
Seiichiro Abe, MD, PhD
- 8:40 am **Techniques and approaches to esophageal ESD from the West**
Dennis Yang, MD
- 9:00 am **The next frontier: Adjuvant therapy after endoscopic resection of high-risk GI tumors**
Kanika Nair, MD and
Suneel Kamath, MD
- 9:20 am **Pushing the limits of advanced endoscopy and the role of surgical assistance**
Jennifer Paruch, MD
- 9:40 am **Break/Exhibits**
- 10:10 am **Endorobotics: Future of endoscopy or a fantasy? A surgeon's perspective**
Sang Lee, MD
- 10:30 am **Endorobotics: Future of endoscopy or the next NOTES: A gastroenterologist's perspective**
Hiro Aihara, MD
- 10:50 am **Malignant polyps and histopathology: How should the ideal report look like?**
Daniela Allende, MD

11:10 am **Q&A/Working Lunch**
6 Continents Ballroom

12:15 pm **Walk to Lab**
1:00 pm **Hands-On Lab**
All Faculty

5:00 pm **Day 1 Adjourn**

DAY 2

Saturday, November 8, 2025

- 8:00 am **Registration, Continental Breakfast and Exhibits**
- 8:30 am **Recap and Overview of Day 2**
Amit Bhatt, MD and
Emre Gorgun, MD, MBA
- 8:45 am **Future of endoscopic resection innovations: Perspective from industry**
Brian Dunkin, MD
- 9:05 am **Lessons learned from building a successful robotic surgical program**
Venkatesh Munikrishnan, MD
- 9:25 am **Video Case Review – Case 1 Under water ESD**
Alberto Murino, MD
- 9:45 am **Video Case Review – Case 2**
Joshua Sommovilla, MD
- 10:05 am **Video Case Review – Case 3**
- 10:25 am **Video Case Review – Case 4**
Richard Whelan, MD
- 10:45 am **Video Case Review – Case 5 Closure of ESD defects**
Roberto Simons-Linares, MD
- 11:05 am **Exhibits/Lunch**
6 Continents Ballroom
- 11:45 am **Walk to Lab**
- 12:00 pm **Hands-On Lab**
All Faculty
- 4:00 pm **Day 2 Adjourn**

General Information

Meeting Location

InterContinental Cleveland, Bank of America Amphitheater
9801 Carnegie Avenue
Cleveland, OH 44106

(Lab will be held at Cleveland Clinic Surgical Skills Training Laboratory, L1-300)

Lodging

ON CAMPUS

InterContinental Hotel &
Conference Center
216.707.4100

InterContinental Suites Hotel
216.707.4300

NEAR CAMPUS

DoubleTree Tudor Arms
216.445.1260

Courtyard by Marriott
University Circle
216.791.5678

REGISTER ONLINE at ccfcme.org/ESDE2025

Fee includes: Continental breakfast, lunch, syllabus, and consenting faculty PowerPoint presentations in pdf format, post-course.

Category	Fee ON or BEFORE September 1, 2025	Fee AFTER September 1, 2025
Physician	\$695	\$795
Resident/Fellow	\$495	\$595
Non-Physician (didactics only)	\$495	\$595
Corporate Attendees (didactics only)	\$1,200	\$1,300

Registration and Cancellation

Preregistrations are accepted online until October 1, 2025. Slots are limited so we cannot accommodate walk-ins. In case of cancellation, a full refund will be made if canceled by October 1, 2025. Written notification of cancellation is required in order to process your refund. NO REFUNDS WILL BE ISSUED AFTER October 1, 2025.

For further information about this activity, contact Jennifer DiPiero, Administrative Program Coordinator, at dipierj@ccf.org.

Website: ccfcme.org/ESDE2025

Cleveland Clinic Center for Continuing Education reserves the right to cancel or postpone an activity at our sole discretion. In the unlikely event that this occurs, any registration fee(s) paid will be refunded. Be advised that Cleveland Clinic is not responsible for related costs including airline tickets, hotel costs, or any similar fee penalties incurred as a result of any activity cancellations or changes.