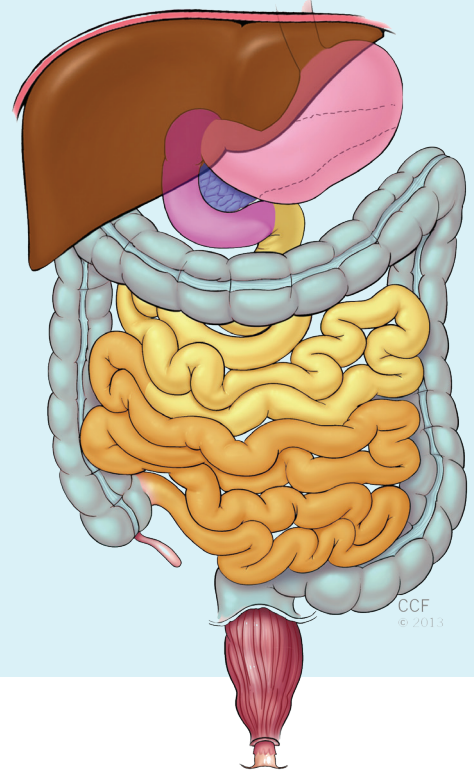


2024

# Gastroenterology Update: *Controversies, Innovations, Research*

**SATURDAY, NOV. 2, 2024**

Corporate College East  
Warrensville Heights, Ohio



Recognized by

**CROHN'S & COLITIS**  
FOUNDATION



*Cleveland Clinic Center for Continuing Education reserves the right to cancel or postpone an activity at our sole discretion. In the unlikely event that this occurs, any registration fee(s) paid will be refunded. Be advised that Cleveland Clinic is not responsible for related costs including penalties incurred as a result of any cancellations or changes.*

## Description/Overview

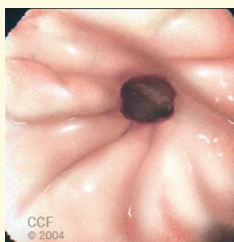
This in-person educational program will provide updates in diagnoses, treatments, and cutting-edge research on gastrointestinal (GI) disorders. Included are didactic lectures and case-based panel discussions from world-renowned gastroenterology specialists. Featured are a variety of topics in the areas of Neurogastroenterology & Motility, General GI, Swallowing Center, Therapeutic Advanced Endoscopy, Liver Diseases, and Inflammatory Bowel Diseases as comprehensive reviews of gastroenterology.

## Who Should Attend?

This course is designed for practicing physicians, fellows, residents, nurses, physician assistants, nurse practitioners, and other healthcare professionals in gastroenterology, internal medicine, family practice, and gastrointestinal surgery.

## Objectives

- Review behavioral therapy options for patients with gastroenterology diseases
- Discuss practical tips for feeding tubes
- Examine what is new and old in treating patients with Celiac Disease
- Uncover what practical tips, what is new and out in acute and chronic pancreatitis
- Identify advanced therapies for Barrett's Disease
- Determine the difficulties of Hepatitis B
- Recognize the changing landscapes and paradigm in Primary Biliary Cholangitis
- Summarize the management of Pouch disorders and dietary management of IBD
- Analyze treatments for Fibrostenotic Crohn's Disease



## TESTIMONIALS FROM PAST ATTENDEES

### Feedback for presenters...

*"Excellent info and presenters, really enjoyed this one."*

*"All were very informative, and information provided was organized well in an easy-to-understand format."*

### Impacts as a member of the healthcare team...

*"Increased my knowledge on GI and liver disorders; Good networking."*

*"Guidelines with IBD biologic use, clinical trial data – very helpful. Testing for liver disease, discussion on obesity epidemic in the US - very helpful; anxiety and depression in IBD and the need for more support from colleagues in mental health."*

*"I had not considered ordering a PET scan for patients with IgG4-related disease; I thought it was interesting in the provided case in that it provided more information regarding disseminated disease. I also needed a review of the new nomenclature for metabolic associated liver disease (etc.) so that I may document properly..."*

## AGENDA (Subject to change)

**Saturday, November 2, 2024**

**7:00 AM Exhibits/Continental Breakfast**

**7:55 AM Welcome and Introduction**

### Neurogastroenterology & Motility/Swallowing Center/General Gastroenterology

**8:00 AM Behavioral Therapy Options in 2024** – Stephen Lupe, PhD

**8:20 AM Practical Tips for Feeding Tubes** – Lauren Bruwer, CNS

**8:40 AM Celiac Disease: What's New and Old in 2024?** – Claire Jansson-Knodell, MD

**9:00 AM Case Presentations** – Scott Gabbard, MD

Panelists – Lauren Bruwer and Drs. Stephen Lupe and Claire Jansson-Knodell

**9:30 AM Break / Exhibits**

**9:45 AM Charles Brown Memorial Lecture**

*"Endoscopic Submucosal Dissection: What Gastroenterologists Need to Know"*  
– Moamen Gabr, MD

Associate Professor of Clinical Internal Medicine

College of Medicine, University of Cincinnati, Cincinnati, OH

**10:45 PM Break / Exhibits**

### Therapeutic Advanced Endoscopy

**11:00 AM Advanced Therapies for Barrett's Disease** – Sunguk Jang, MD

**11:20 AM Acute Pancreatitis – What's In and What's Out** – Syed Mohiuddin, MD

**11:40 AM Chronic Pancreatitis – Practical Tips** – Tyler Stevens, MD

**12:00 PM Case Presentations** – Hassan Siddiki, MD

Panelists – Drs. Syed Mohiuddin, Sunguk Jang, and Tyler Stevens

**12:45 PM Lunch / Exhibits**

### Liver Diseases

**1:45 PM What's So Difficult About Hepatitis B?** – William Carey, MD

**2:05 PM Changing Landscape and Paradigm in PBC** – Dian-Jung Chiang, MD

**2:25 PM Updates in Liver Cancer** – Maureen Whitsett Linganna, MD

**2:45 PM Case Presentations** – Jamak Modaresi-Esfah, MD

Panelists – Drs. William Carey, Dian Jung Chiang, and Maureen Whitsett Linganna

**3:15 PM Break / Exhibits**

### Inflammatory Bowel Disease–IBD

**3:30 PM Updates in the Management of Pouch Disorders** – Taha Qazi, MD

**3:50 PM Dietary Management of Inflammatory Bowel Disease** – David Gardinier, RD

**4:10 PM Fibrostenotic Crohn's Disease** – Florian Rieder, MD

**4:30 PM Case Presentations** – Maliha Naseer, MD

Panelists – David Gardinier and Drs. Taha Qazi and Florian Rieder

**5:00 PM Adjourn**



Join us at the Corporate College Conference Center, located in Warrensville Heights, Ohio – First floor conference room #126.

## Faculty, Department of Gastroenterology, Hepatology and Nutrition

### PROGRAM CO-DIRECTORS



**Scott Gabbard, MD**  
Assistant Professor  
Cleveland Clinic Lerner  
College of Medicine



**Jamak Modaresi Esfeh, MD**  
Medical Director,  
Liver Transplantation  
Assistant Professor, Cleveland Clinic  
Lerner College of Medicine  
Department of Gastroenterology,  
Hepatology and Nutrition



**Maliha Naseer, MD**  
Staff, Gastroenterology Specialist  
Department of Gastroenterology,  
Hepatology and Nutrition



**Hassan Siddiki, MD**  
Assistant Professor of Medicine,  
Case Western Reserve University  
Cleveland Clinic Lerner  
College of Medicine  
Department of Gastroenterology,  
Hepatology and Nutrition

### CHARLES BROWN LECTURE KEYNOTE SPEAKER



**Moamen Gabr, MD**  
Associate Professor of Clinical Gastroenterology  
Department of Internal Medicine  
College of Medicine  
University of Cincinnati, Cincinnati, OH

### CLEVELAND CLINIC FACULTY

Lauren Bruwer, CNS

William Carey, MD

Dian-Jung Chiang, MD

David Gardinier, RD

Sunguk Jang, MD

Claire Jansson-Knodell, MD

Stephen Lupe, PsyD

Syed Mohiuddin, MD

Taha Qazi, MD

Florian Rieder, MD

Tyler Stevens, MD

Maureen Whitsett Linganna, MD

Register online today at [www.ccfcmc.org/Glupdate](http://www.ccfcmc.org/Glupdate)



# GENERAL INFORMATION

## LOCATION

### Corporate College East

4400 Richmond Road, Warrensville Heights, Ohio 44128

## HOTELS

### Marriott Cleveland East (216.378.9191)

26300 Harvard Road, Warrensville Heights, Ohio 44122

[www.marriott.com/en-us/hotels/cleem-cleveland-marriott-east](http://www.marriott.com/en-us/hotels/cleem-cleveland-marriott-east)

### Aloft Beachwood (216.595.0900)

1010 Eaton Boulevard, Beachwood, Ohio 44122

[www.marriott.com/en-us/hotels/clebe-aloft-cleveland-beachwood](http://www.marriott.com/en-us/hotels/clebe-aloft-cleveland-beachwood)

## INFORMATION

For further information about this program, please contact Digestive Disease Institute via email at [coopera1@ccf.org](mailto:coopera1@ccf.org).

## REGISTRATION

Register online today at [www.ccfme.org/Glupdate](http://www.ccfme.org/Glupdate).

Pre-registrations will be accepted online until 2:00 pm, EDT on Thursday, October 31, 2024. For questions about registering online, email [cmeregistration@ccf.org](mailto:cmeregistration@ccf.org) or call 216.448.8710.

Registration fees for this “in-person” program includes attendance to in-person lectures, program booklet/handout and meals: continental breakfast, lunch, and refreshment breaks.

### \*\*Discounted Rates Available\*\*

Category	On or Before 9/30/2024	After 9/30/2024
Physician	\$150	\$250
*Resident/Fellow	\$75	\$125
Cleveland Clinic Alumni	\$125	\$175
Corporate (Registration required for credit claiming)	\$275	\$375
Nurse/Non-Physician	\$75	\$125

\*Letter from program director is required to receive the discounted fee. If letter is not received two weeks prior to the activity, the full physician fee will be charged.

## CANCELLATION POLICY

Full refund until 10/11/2024. After 10/11/2024, a \$50 cancellation fee will be deducted from refund. No Refunds after October 18, 2024.

In case of cancellation, an email notification is required to process your refund.

## ACCREDITATION

In support of improving patient care, Cleveland Clinic Center for Continuing Education is jointly accredited by the Accreditation Council for Continuing Medical Education (ACCME), the Accreditation Council for Pharmacy Education

(ACPE), and the American Nurses Credentialing Center (ANCC), to provide continuing education for the healthcare team.

### \*Credit Designation

#### American Medical Association (AMA)

Cleveland Clinic Foundation Center for Continuing Education designates this live activity for a maximum of 7.25 *AMA PRA Category 1 Credits™*. Physicians should claim only the credit commensurate with the extent of their participation in the activity.

Participants claiming CME credit from this activity may submit the credit hours to the American Osteopathic Association for Category 2 credit.

#### American Nurses Credentialing Center (ANCC)

Cleveland Clinic Center for Continuing Education designates this live activity for a maximum of 7.25 ANCC contact hours.

### \*MOC – Maintenance of Certification

Successful completion of this CME activity, which includes participation in the evaluation component, enables the participant to earn up to:

- **ABIM MOC:** 7.25 Medical Knowledge Practice Assessment MOC points in the ABIM MOC Assessment Recognition Program
- **ABP MOC:** 7.25 Lifelong Learning & Self-Assessment MOC points in the ABP Maintenance of Certification Program
- **ABS CC:** 7.25 Accredited CME & Self-Assessment credits toward ABS Continuous Certification Program

It is the CME activity provider's responsibility to submit participant completion information to ACCME for the purpose of granting ABIM, ABP, and ABS credit.

Credit will be reported within 30 days of claiming credit.

## FACULTY DISCLOSURE

The Cleveland Clinic Foundation Center for Continuing Education has implemented a policy to comply with the current Accreditation Council for Continuing Medical Education Standards for Integrity and Independence requiring mitigation of all faculty conflicts of interest. Faculty declaring a relevant financial relationship will be identified in the activity syllabus.

## AMERICANS WITH DISABILITIES ACT

The Cleveland Clinic Foundation Center for Continuing Education fully intends to comply with the legal requirements of the Americans with Disabilities Act. If you need assistance, please notify us at least two weeks prior to the activity.

## HEALTH AND SAFETY INFORMATION

All applicable Centers for Disease Control (CDC), state, and local safety protocols will be enforced for this event. Additional attendance requirements may be implemented to ensure attendee health and safety.

Register online today at [www.ccfme.org/Glupdate](http://www.ccfme.org/Glupdate)