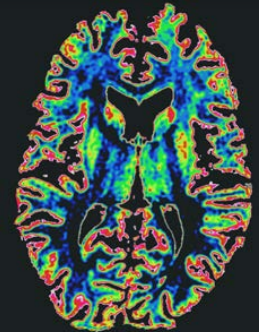


2026 Neurology Update: A Comprehensive Review for the Clinician

August 7–9, 2026 | The Ritz-Carlton, Washington, D.C.
and Live Stream



Featuring up to 17 CME credits | ABPN-Approved for Self-Assessment Credits

Welcome

ABOUT THE COURSE

Welcome to the 17th Annual Cleveland Clinic Neurology Update. On behalf of the Neurological Institute at the Cleveland Clinic we would like to welcome you to our annual course and hope you find it valuable in your continuing care of patients with neurological disease. We are excited to bring you a hybrid meeting that is a clinically focused review course with updated information on a broad range of neurological conditions. We have incorporated smaller group breakout sessions for a more connected interaction and experience. The case-based breakouts will focus on headache, dementia and Parkinson's disease. All course participants will have a chance to attend each session.

This year we will address genetic testing, neuromuscular diseases/conditions, tumor suppressor syndromes, neuroinfectious diseases, brain incidentalomas and neuroradiology. We will continue to include presentations on stroke updates, epilepsy, multiple sclerosis and sleep. Our interactive course will allow time for Q&A after each lecture and we will encourage active participation using the audience response/polling system to incorporate a self-assessment where you will see how your answer choices compare to your peers.

The course will also continue to offer CME Self-Assessment credits approved by the American Board of Psychiatry and Neurology for continuing certification mandated by ABMS.

We hope this course adds to your knowledge base and enhances patient care.

We look forward to learning with you during this course!



Glen Stevens, DO, PhD, FAAN
Course Co-Director



Robert Marquardt, DO
Course Co-Director

**A Hybrid
Interactive
Meeting**

FEATURED TOPICS

Brain Incidentalomas
Dementia
Epilepsy
Genetic Testing
Headache Cases
Multiple Sclerosis
Myasthenia Gravis
Neuroinfectious
Diseases
Neuroradiology
Parkinson's Disease
Peripheral Nerve Injury
Polyneuropathy
and CIDP
Tumor Suppressor
Syndromes in Neurology
Sleep and Technology
Stroke

ccfcme.org/NeuroUpdate

Faculty

CLEVELAND CLINIC COURSE CO-DIRECTORS

Glen Stevens, DO, PhD, FAAN

Section Head, Adult Neuro-Oncology
Rose Ella Burkhardt Brain Tumor and
Neuro-Oncology Center
Neurological Institute

Robert Marquardt, DO

Assistant Professor, Cleveland Clinic Lerner College
of Medicine of Case Western Reserve University
Staff, Neuromuscular Center
Neurological Institute

CLEVELAND CLINIC FACULTY

A. Blake Buletko, MD

Assistant Professor, Cleveland Clinic Lerner College
of Medicine of Case Western Reserve University
Staff, Cerebrovascular Center
Neurological Institute

Alise Carlson, MD, MSc

Assistant Professor, Cleveland Clinic Lerner
College of Medicine of Case Western Reserve University
Associate Staff, Mellen Center for Multiple Sclerosis
Neurological Institute

Brian Chen, MD

Staff, Sleep Disorders Center
Neurological Institute

Benjamin Claytor, MD

Assistant Professor, Cleveland Clinic Lerner College
of Medicine of Case Western Reserve University
Staff, Neuromuscular Center
Neurological Institute

Nicholas Doherty, DO

Associate Staff, Lou Ruvo Center for Brain Health
Neurological Institute

Angelika Erwin, MD, PhD

Assistant Professor, Cleveland Clinic Lerner College
of Medicine of Case Western Reserve University
Department of Medical Genetics and Genomics
Medical Specialties Institute

Hubert H. Fernandez, MD

James and Constance Brown Family Endowed Chair
in Movement Disorders
Professor, Cleveland Clinic Lerner College of Medicine
of Case Western Reserve University
Director, Center for Neurological Restoration
Neurological Institute

Carlos Isada, MD

Clinical Assistant Professor, Cleveland Clinic Lerner
College of Medicine of Case Western Reserve University
Staff, Infectious Disease
Integrated Hospital Care Institute

Megan Jack, MD, PhD

Assistant Professor, Cleveland Clinic Lerner
College of Medicine of Case Western Reserve University
Staff, Center for Spine Health
Neurological Institute

Mina Lobbous, MD, MPH

Assistant Professor, Cleveland Clinic Lerner
College of Medicine of Case Western Reserve University
Staff, Rose Ella Burkhardt Brain Tumor and
Neuro-Oncology Center
Neurological Institute

Tara Miller, MSN, APRN-CNP

Team Lead APP, Rose Ella Burkhardt Brain Tumor
and Neuro-Oncology Center
Neurological Institute

Madisen Olson, DO, MBA

Associate Staff Neurologist
Center For Neurological Restoration
Headache & Facial Pain Section
Neurological Institute

Vineet Punia, MD, MS

Clinical Instructor, Cleveland Clinic Lerner
College of Medicine of Case Western Reserve University
Associate Staff, Epilepsy Center
Neurological Institute

Susan Stanton, PA-C, MS, MSHS

APP Manager – Brain Tumor, Epilepsy, NI Research
Neurological Institute

Jenny Wu, MD

Clinical Assistant Professor, Cleveland Clinic Lerner
College of Medicine of Case Western Reserve University
Associate Staff, Diagnostic Radiology
Imaging Institute

TARGET AUDIENCE

This course is directed towards neurologists, internists and family practice physicians, advanced practice providers including PAs and APRNs, nurses and others involved in the diagnosis and treatment of neurological disorders.

OBJECTIVES

Upon completion of this activity, the participant will be able to:

- Discuss updated strategies for acute stroke prevention and treatment.
- Review updated diagnostic criteria and cases for the management of multiple sclerosis.
- Discuss advances in epilepsy management for various clinical settings and demographics.
- Outline current clinical strategies in the management of dementia, neuroinfectious diseases, headache, tumor suppressor syndromes, and Parkinson's disease.
- Describe recent technological innovations and established best practices in neuroradiology through specific techniques and individual case studies.
- Review recent research and updates on neuromuscular conditions, including myasthenia gravis, chronic inflammatory demyelinating polyneuropathy (CIDP), and peripheral nerve injuries.
- Discuss the use of genetics in the diagnosis, management, and treatment of neurological disorders.
- Outline the use of technology in the diagnosis and treatment of sleep disorders.

PLANNING COMMITTEE

Glen Stevens, DO, PhD, FAAN

Robert Marquardt, DO

Tara Miller, MSN, APRN-CNP

Susan Stanton, PA-C, MS, MSHS

Agenda

Time for questions and answers are included in each presentation.

FRIDAY, AUGUST 7, 2026 • EASTERN TIME

*1.50 hours of APRN pharmacology credit

- 7:00 am **Registration/Continental Breakfast/Exhibits/Self-Assessment Online Pre-Test**
- 8:00 am **Introduction** – SALON I: *Glen Stevens & Robert Marquardt*
- 8:10 am **Updates in Cerebrovascular Care*** – *A. Blake Buletko*
- 8:50 am **Stroke Cases*** – *A. Blake Buletko*
- 9:30 am **Genetic Testing and Panels for Neurological Disorders** – *Angelika Erwin*
- 10:10 am **Refreshment Break & Exhibits** – SALON II
- 10:30 am **Acute Symptomatic Seizures: Management and Outcomes*** – *Vineet Punia*
- 11:10 am **New-onset Epilepsy Management in Older Adults*** – *Vineet Punia*
- 11:50 am **Historical Vignette and Panel Discussion / Q&A**
Glen Stevens, Robert Marquardt, A. Blake Buletko, Angelika Erwin and Vineet Punia
- 12:20 pm **Buffet Lunch** – SALON II
- 1:20 pm **Update on Multiple Sclerosis*** – *Alise Carlson*
- 2:00 pm **Multiple Sclerosis Management Cases*** – *Alise Carlson*
- 2:40 pm **Multiple Sclerosis Q&A** – *Alise Carlson*
- 2:55 pm **Refreshment Break & Exhibits** – SALON II
- 3:15 pm **Neuro Jeopardy / AAN Updates*** – *Glen Stevens and Robert Marquardt*
- 4:15 pm **Adjourn**

SATURDAY, AUGUST 8, 2026 • EASTERN TIME

*2.25 hours of APRN pharmacology credit

- 7:30 am **Registration/Continental Breakfast/Exhibits**

Interactive Case-based Breakout Sessions

In-person attendees will be assigned to a room and the speakers will rotate through discussing each topic below.

- TOPICS:**
 - Headache Cases*:** *Madisen Olson*
 - Dementia Cases*:** *Nicholas Doher*
 - Parkinson's Disease Cases*:** *Hubert Fernandez*
- 8:00 am **Breakout Session Introductions:** General Session Room
SALON I – *Robert Marquardt*
- 8:10 am **Breakout Session 1: Salon I, Plaza I, Plaza II**
- 9:10 am **Breakout Session 2: Salon I, Plaza I, Plaza II**
- 10:10 am **Refreshment Break** – SALON II
- 10:30 am **Breakout Session 3: Salon I, Plaza I, Plaza II**
- 11:30 am **Audience Response / Questions & Answers from Breakout Sessions**
SALON I – *Madisen Olson, Nicholas Doher and Hubert Fernandez*
- 12:00 pm **Buffet Lunch** – SALON II

Agenda CONTINUED

Time for questions and answers are included in each presentation.

- 1:00 pm **Update on Myasthenia Gravis Treatment*** – *Benjamin Claytor*
- 1:40 pm **New Treatments for Polyneuropathy and CIDP*** – *Benjamin Claytor*
- 2:20 pm **Refreshment Break & Exhibits** – SALON II
- 2:40 pm **Neuroinfectious Diseases*** – *Carlos Isada*
- 3:20 pm **Tumor Suppressor Syndromes in Neurology, Therapeutic Development and Comprehensive Care Models***
Mina Lobbous
- 4:00 pm **Historical Vignette and Panel Discussion / Q&A**
Glen Stevens, Robert Marquardt, Benjamin Claytor, Carlos Isada and Mina Lobbous
- 4:20 pm **Adjourn**

SUNDAY, AUGUST 9, 2026 • EASTERN TIME

*.25 hours of APRN pharmacology credit

- 7:30 am **Registration/Continental Breakfast/Exhibits**
- 8:00 am **Neuroradiology – Spine** – *Jenny Wu*
- 8:40 am **Neuroradiology – Brain*** – *Jenny Wu*
- 9:20 am **Brain Incidentalomas** – *Tara Miller*
- 9:40 am **Epilepsy Management for Women*** – *Susan Stanton*
- 10:00 am **Refreshment Break** – SALON II
- 10:20 am **Peripheral Nerve Injury** – *Megan Jack*
- 11:00 am **Sleep and Technology** – *Brian Chen*
- 11:40 am **Historical Vignette and Panel Discussion / Q&A**
Glen Stevens, Robert Marquardt, Jenny Wu, Tara Miller, Susan Stanton, Megan Jack and Brian Chen
- 12:00 pm **Adjourn**

ABPN SELF-ASSESSMENT

The American Board of Psychiatry and Neurology has reviewed the 2026 Neurology Update: A Comprehensive Review for the Clinician and has approved this activity as part of a comprehensive self-assessment (SA) CME activity, which is in compliance with the ABMS continuing certification standards.

You will receive a link to the online pre-test via email prior to the course to complete as part of your self-assessment. The answers to the test questions will be addressed during the lectures using the Audience Response/Polling System.

General Information

LOCATION

The Ritz-Carlton, Washington, D.C.
Phone: 202.835.0500
1150 22nd Street, NW, Washington, DC 20037

HOTEL ACCOMMODATIONS

A block of rooms has been reserved at The Ritz-Carlton, Washington, D.C. To make your reservation, contact the hotel directly at 202.835.0500 or 1.800.558.9994 and mention the “Cleveland Clinic Neurology Update” to receive the special rate of \$300 per night plus tax. You may also make your reservation online at www.ritzcarlton.com using code CLECLEA – Deluxe King or CLECLEL – Deluxe Double. This discounted course rate is available until **Friday, July 24, 2026**, or until the course room block is fully booked, whichever comes first.

The Ritz-Carlton is:

- 40 minutes east of Dulles International Airport
- 10 minutes (4.2 miles) north of Ronald Reagan Washington National Airport
- 10 minutes from the White House, the Smithsonian museums and many other historic sites

PARKING

Discounted parking is available at The Ritz-Carlton, Washington, D.C. for a special course rate of \$45.00 for overnight valet and \$35.00 for daily valet parking (up to 12 hours). A self-parking garage is also available at the hotel and rates vary.

FACULTY DISCLOSURE STATEMENT

The Cleveland Clinic Center for Continuing Education has implemented a policy to comply with the current Accreditation Council for Continuing Medical Education Standards for Integrity and Independence requiring mitigation of all faculty conflicts of interest. Faculty declaring a relevant financial relationship will be identified in the activity syllabus.

FACULTY PRESENTATIONS

Faculty presentation slides will be available online in PDF format. You will have access prior to the activity to allow you to download or print the slides.

INFORMATION

For further information about this activity, contact Liz Eaton at Phone: 216.385.9076 or Email: eatonl3@ccf.org

ACCREDITATION

In support of improving patient care, Cleveland Clinic Center for Continuing Education is jointly accredited by the Accreditation Council for Continuing Medical Education (ACCME), the Accreditation Council for Pharmacy Education (ACPE), and the American Nurses Credentialing Center (ANCC), to provide continuing education for the healthcare team.

CREDIT DESIGNATION

• American Medical Association (AMA)

Cleveland Clinic Center for Continuing Education designates this live activity for a maximum of 17 *AMA PRA Category 1 Credits™*. Physicians should claim only the credit commensurate with the extent of their participation in the activity.

Participants claiming CME credit from this activity may submit the credit hours to the American Osteopathic Association for Category 2 credit.

• American Nurses Credentialing Center (ANCC)

Cleveland Clinic Center for Continuing Education designates this live activity for a maximum of 17 ANCC contact hours, that includes 4 contact hours for APRN pharmacology credit.

• American Academy of PAs (AAPA)

Cleveland Clinic Center for Continuing Education has been authorized by the American Academy of PAs (AAPA) to award AAPA Category 1 CME credit for activities planned in accordance with AAPA CME Criteria. This activity is designated for 17 AAPA Category 1 CME credits. PAs should only claim credit commensurate with the extent of their participation.

American Academy of Family Physicians (AAFP)

Application for CME credit has been filed with the American Academy of Family Physicians. Determination of credit is pending.

Certificate of Participation: A certificate of participation will be provided to other health care professionals for requesting credits in accordance with their professional boards and/or associations.

AMERICANS WITH DISABILITIES ACT

The Cleveland Clinic Center for Continuing Education fully intends to comply with the legal requirements of the Americans with Disabilities Act. If you need assistance, please notify Liz Eaton at 216.385.9076 or eatonl3@ccf.org at least two weeks prior to the activity.

Registration and Cancellation

Payment must be received prior to the course. Purchase orders are not accepted.

REGISTER AT: WWW.CCFCME.ORG/NEUROUPDATE

COURSE FEES

- **In-person** registration includes: online syllabus, continental breakfasts, refreshment breaks and two buffet luncheons.
- **Live Stream** registration includes: virtual meeting attendance and online syllabus.

Registration Category	In-Person or Live Stream
Physician	\$650
Active Duty Military	\$550
Resident*/Fellow*	\$550
Cleveland Clinic Alumnus	\$585
Non-Physician	\$550

CCF Employees should check fees and register online at the above web address.

*Letter from Program Director or Chairman must be received in our office prior to the course to receive this fee.

Preregistrations are accepted online until 5:00 PM ET, Friday, July 31, 2026. To register after this date, please do so onsite. In case of cancellation, a full refund will be made if canceled by July 24, 2026. After July 24, 2026, a \$50 cancellation fee will be deducted from your refund. **NO REFUNDS WILL BE ISSUED AFTER JULY 31, 2026.** Written notification of your cancellation is required in order to process your refund.

For questions about registering online, call 216.448.8710 or email cmeregistration@ccf.org

Cleveland Clinic Center for Continuing Education reserves the right to cancel or postpone activity in our sole discretion. In the unlikely event that this occurs, any registration fee(s) paid will be refunded. Be advised that Cleveland Clinic is not responsible for related costs including airline tickets, hotel costs, or any similar fee penalties incurred as a result of any trip cancellations or changes.

