



The Cleveland Clinic Foundation  
Neurological Institute  
9500 Euclid Ave., JJ36  
Cleveland, OH 44195

Cleveland Clinic  
Over 75 Years of Excellence in  
CONTINUING MEDICAL EDUCATION



# Practical Management of Acute Stroke

**September 4, 2009**

InterContinental Hotel and  
Bank of America Conference Center  
Cleveland, OH

Course Directors:

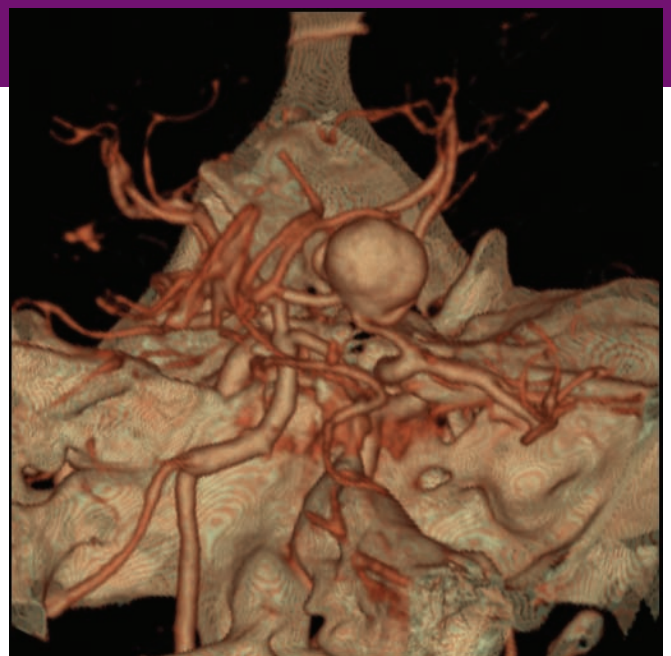
**Peter Rasmussen, MD** and  
**Irene Katzan, MD**

Cleveland Clinic Cerebrovascular Center

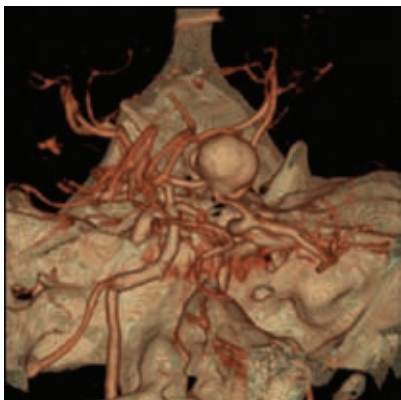
Featured Speaker:

**Joseph Broderick, MD**

University of Cincinnati



# Practical Management of Acute Stroke



## Program Description

Advances in diagnosis, treatment and secondary prevention continue to evolve in stroke and cerebrovascular disease. The window for administration of intravenous Alteplase (tPA) has expanded to include patients eligible up to 4.5 hours from onset of symptoms, almost doubling the opportunity for treatment. The urgency for treating patients who have had one or more transient ischemic attacks (TIAs) is increasing, as their relevance in predicting stroke becomes clearer. Licensed independent practitioners need to stay abreast of the medical, interventional and surgical management options, as well as the expanding cadre of triage, test, and evaluation techniques and technologies available to calculate the risks and benefits of each option for each patient. This course provides practical, applicable updates on the state of diagnosis and treatment for ischemic and hemorrhagic stroke.

## Learning Objectives

1. Discuss optimal practices for pre-hospital and emergency department triage of acute stroke patients.
2. Explain and apply the rationale for the expanded treatment window for IV tPA.
3. Apply enhanced diagnostic evaluation criteria in determining course of treatment to patients presenting with acute stroke symptoms.
4. Incorporate current criteria in managing TIAs, ischemic, and hemorrhagic stroke.
5. Discuss current clinical understanding of treatment regimen for atrial fibrillation.
6. Apply information on performance measures and systems approach to care of acute stroke patients.
7. Describe the impact of applying performance measures and systems in secondary prevention of stroke.

## Target Audience

Neurologists, emergency medicine physicians, neurosurgeons, internal medicine and primary care physicians, nurses, physician assistants, physical therapists and occupational therapists.

## Symposium Directors

### **Peter Rasmussen, MD**

Cleveland Clinic Cerebrovascular Center

### **Irene Katzan, MD**

Cleveland Clinic Cerebrovascular Center

## Symposium Faculty

### **James Gebel, MD**

Cleveland Clinic Cerebrovascular Center

### **Rishi Gupta, MD**

Cleveland Clinic Cerebrovascular Center

### **Ferdinand Hui, MD**

Cleveland Clinic Cerebrovascular Center

### **Damon Kralovic, DO**

Cleveland Clinic Emergency Services Institute

### **Alice Liskay, RN**

Ohio Coverdell Stroke Registry Center  
for Healthcare Research and Policy

### **Shaye Moskowitz, MD**

Cleveland Clinic Cerebrovascular Center

## Featured Speaker

### **Joseph Broderick, MD**

University of Cincinnati

### **Nancy D. Papesh, BSN, RN, CFRN, EMT-B**

Cleveland Clinic Cerebrovascular Center

### **Javier Provencio, MD**

Cleveland Clinic Cerebrovascular Center

### **Larry Raber, RVT**

Cleveland Clinic Neuroradiology

### **Walid Saliba, MD**

Cleveland Clinic Cardiovascular Medicine

### **Ken Uchino, MD**

Cleveland Clinic Cerebrovascular Center

### **Jan A. Weinhardt, MSN, RN, CS**

Summa Health System

## Agenda

- 7:45 am Opening Remarks  
*Peter Rasmussen*
- 8:00 am Keynote Address: "Expanded Window for IV tPA"  
*Joseph Broderick*
- 8:45 am EMS & ED Stroke Triage & Priorities  
*Damon Kralovic*
- 9:15 am Endovascular Management of Stroke  
*Rishi Gupta*
- 9:45 am Critical Care Management of Malignant MCA Stroke:  
What Happens When the Pressure Gets Bad  
*Javier Provencio*
- 10:15 am Break
- 10:30 am Evaluation & Management of Acute Hemorrhage  
*Shaye Moskowitz*
- 11:00 am Subarachnoid Hemorrhage  
*Peter Rasmussen*
- 11:30 am Decisions: Complex Case Presentations
- 12:00 pm Lunch
- 1:00 pm Carotid Artery Disease  
*James Gebel*
- 1:30 pm Intracranial Atherosclerotic Disease  
*Ferdinand Hui*
- Point/Counterpoint: To Treat or Not To Treat  
*Ken Uchino*
- 2:00 pm Atrial Fibrillation: Beyond Coumadin, Rate vs Rhythm  
*Walid Saliba*
- 2:30 pm TIA & Stroke: Warning, Will Robinson...  
*Irene Katzan*
- 3:00 pm Break
- 3:15 pm Transcranial Doppler Applications and Advances  
*Larry Raber*
- 3:45 pm Systems to Make It Happen:  
Stroke Program Coordination  
*Nancy Papesh, Alice Liskay, Jan Weinhardt*
- 4:30 pm Q & A
- 4:45 pm Closing Remarks

## Location

InterContinental Hotel and Bank of America Conference Center  
9801 Carnegie Ave, Cleveland, OH 44106  
Telephone: 877-707-8999 or 216-707-4100

A block of rooms has been reserved at the InterContinental Hotel at the special group rate of \$159 per night plus 15.25% tax. Reservations must be made by Friday, August 21, 2009, in order to qualify for this rate.

## Information

For further information about this activity, contact Martha Tobin at  
Local: 216-445-3449  
Toll Free: 800-223-2273 x53449  
Email: [tobinm@ccf.org](mailto:tobinm@ccf.org)

## Deadline for Registration and Cancellation

Register at [www.ccfme.org/acutestroke09](http://www.ccfme.org/acutestroke09). Deadline for registration for the symposium is **5:00 pm (EST), Monday, August 31, 2009**. A request for a refund must be received in writing by August 31, 2009. No refunds will be given after August 31, but registration is transferable through September 4, 2009 for this program only. A \$50 cancellation fee will be deducted from the refund for all cancellations.

## Accreditation

### For Physicians

The Cleveland Clinic Foundation Center for Continuing Education is accredited by the Accreditation Council for Continuing Medical Education to provide continuing medical education for physicians.

The Cleveland Clinic Foundation Center for Continuing Education designates this educational activity for a maximum of 7.5 *AMA PRA Category 1 Credits™*. Physicians should only claim credit commensurate with the extent of their participation in the activity.

Participants claiming CME credit from this activity may submit the credit hours to the American Osteopathic Association Council on Continuing Medical Education for Category 2 credit.

**This program fulfills 7.5 hrs of stroke-specific CME requirement for PSC Certification.**

### For Nurses

The Ohio Board of Nursing will accept at face value the number of contact hours awarded for an educational activity that has been approved for CE by a nationally accredited system of CE approval. Therefore, the 7.5 physician *AMA PRA Category 1 credits* will be accepted for nursing credits.

## Faculty Disclosure Statement

The Cleveland Clinic Foundation Center for Continuing Education has implemented a policy to comply with the current Accreditation Council for Continuing Medical Education Standards for Commercial Support requiring resolution of all faculty conflicts of interest. Faculty declaring a relevant commercial interest will be identified in the activity syllabus.

## Americans with Disabilities Act

The Cleveland Clinic Foundation Center for Continuing Education fully intends to comply with the legal requirements of the Americans with Disabilities Act. If you need assistance, please notify Martha Tobin at 216-445-3449 or [tobinm@ccf.org](mailto:tobinm@ccf.org) at least two weeks prior to the activity.

# Registration Form

## Practical Management of Acute Stroke

September 4, 2009

InterContinental Hotel and  
Bank of America Conference Center  
Cleveland, OH

Please check appropriate box

- Physicians – \$225  
 Residents/Fellows/PhDs – \$125  
 RNs/PAs/PTs/OTs/Other Allied Healthcare Professionals – \$79  
 CCF Alumni – \$146.25

To Register Online Go To:  
**[www.ccfme.org/acutestroke09](http://www.ccfme.org/acutestroke09)**

CCF main campus, family health centers, and CCHS community hospital employees  
(physicians and non-physicians) should register online at **[www.ccfme.org/acutestroke09](http://www.ccfme.org/acutestroke09)**

Once you register online, please do not mail or fax in a registration form.

PLEASE PRINT

First Name	MI	Last Name	Degree
Address			
City	State	Zip	
Phone	Fax		
Specialty	E-Mail		

I require a vegetarian lunch

### Payment Options

- Check Enclosed (Made payable to: The Cleveland Clinic Educational Foundation)  
 Visa    MasterCard    AMEX    Discover

Card # \_\_\_\_\_

Name on Card \_\_\_\_\_

Exp Date \_\_\_\_\_ 3/4-digit verification code \_\_\_\_\_

Signature \_\_\_\_\_ Amt Pd \$ \_\_\_\_\_

**If you are unable to register online, FAX your registration to 216-448-0783.**

**If paying by check, registration should be payable and MAILED to:**

The Cleveland Clinic Educational Foundation  
P.O. Box 931653  
Cleveland, OH 44193-1082

  
Cleveland Clinic  
Over 75 Years of Excellence in  
CONTINUING MEDICAL EDUCATION