

B Cells, Cytokines, and Systemic Lupus Erythematosus: Exploring New Therapeutic Strategies

Complimentary Lunch Symposium

Wednesday, October 21, 2009

Loews Philadelphia Hotel • 1:00 pm – 3:15 pm



This symposium is sponsored by The Cleveland Clinic Center for Continuing Education and supported by an educational grant from Human Genome Sciences, Inc. and GlaxoSmithKline. This is not an official program of the American College of Rheumatology.

Register: www.ccfcmec.org/SLE2009

Overview

Systemic lupus erythematosus (SLE) is a chronic, autoimmune disease with no specific cause or cure. An estimated 300,000 Americans suffer from various forms of lupus, including SLE. In the past two decades, the medical understanding of the molecular and cellular basis of SLE pathogenesis has undergone substantial advances, which have accelerated in recent years. Advances in B-cell biology have permitted the development of new therapeutic strategies in SLE based on targeting both cellular and humoral factors. Among these targets are those found on B cells and accessory cells essential for B-cell maturation growth and differentiation leading to autoantibody formation and immune mediated tissue damage. In addition, advances in cytokine biology, including elucidation of the B-cell stimulatory factor-related family of B-cell centric factors, have spurred development of a number of biologic agents, which are in varying stages of clinical development.

This symposium is designed to provide an evidence-based review of research on B-cell pathogenesis in SLE and developments in B-cell targeted therapies for SLE, with the overall goal of improving outcomes in this patient population.

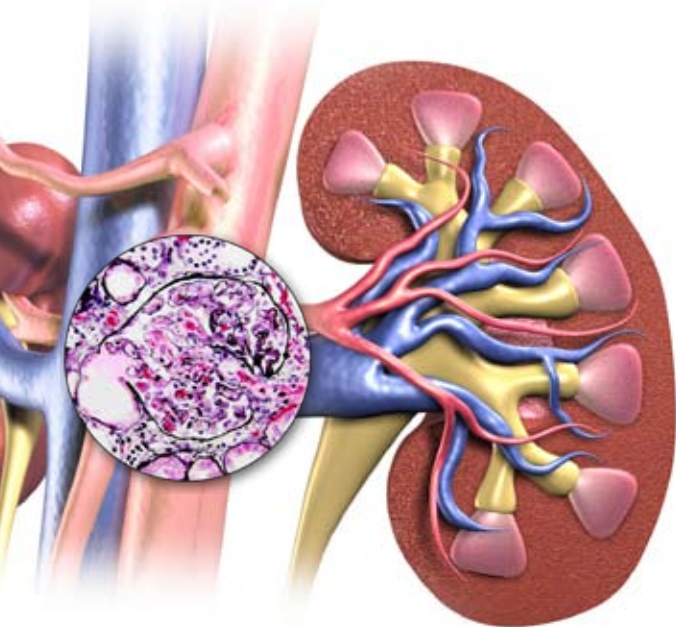
Target Audience

The symposium is intended for rheumatologists, rheumatology fellows, and other interested healthcare professionals.

Symposium Objectives

- Describe the process of B-cell development and censoring of autoreactivity as it applies to the pathogenesis of autoimmunity and SLE;
- Describe the rationale and appraise the results from strategies targeting cellular elements in the humoral immune response in SLE;
- Appraise the results of human trials targeting B-cell survival signals in SLE.

This symposium will be conducted during the 2009 Annual Scientific Meeting of the American College of Rheumatology.



Activity Directors

Leonard H. Calabrese, DO

Professor of Medicine
Cleveland Clinic Lerner College of
Medicine of Case Western
Reserve University
RJ Fasenmyer Chair of Clinical Immunology
Vice Chairman, Department of Rheumatic
and Immunologic Diseases
Orthopaedic & Rheumatologic Institute
Cleveland Clinic
Cleveland, Ohio

Gregg J. Silverman, MD

Professor of Medicine
Director, Laboratory of B Cell Immunology
Division of Rheumatology, Allergy,
and Immunology
University of California, San Diego School
of Medicine
La Jolla, California

Faculty

Jennifer H. Anolik, MD, PhD

Associate Professor of Medicine
Division of Allergy, Immunology
and Rheumatology
University of Rochester Medical Center
Rochester, New York

Joan T. Merrill, MD

Member and Program Chair, Clinical
Pharmacology Research Program
Oklahoma Medical Research Foundation
OMRF Professor of Medicine
University of Oklahoma Medical Center
Medical Director, Lupus Foundation
of America
Oklahoma City, Oklahoma

Agenda

1:00 pm Registration/Lunch

**1:30 pm Introduction: Progress
and Problems in SLE
Therapeutic Research**
Leonard H. Calabrese, DO

**1:40 pm The Role of B Cell
Development in the
Pathogenesis of
Autoimmunity and SLE**
Jennifer H. Anolik, MD, PhD

**2:05 pm Clinical Strategies of
B Cell Targeting in SLE:
A Cellular Approach
from Bench to Bedside**
Gregg J. Silverman, MD

**2:30 pm Clinical Strategies for
B Cell Targeting in SLE:
Soluble Factors as Target**
Joan T. Merrill, MD

2:55 pm Questions/Panel Discussion

3:15 pm Adjourn



General Information

For more information please contact UNITECH Communications® at:
216-448-0770 or 800-238-6750

Location

Loews Philadelphia Hotel, Commonwealth Hall
1200 Market Street
Philadelphia, Pennsylvania 19107
215-627-1200

Accreditation

The Cleveland Clinic Foundation Center for Continuing Education is accredited by the Accreditation Council for Continuing Medical Education to provide continuing medical education for physicians.

The Cleveland Clinic Foundation Center for Continuing Education designates this educational activity for a maximum of 1.75 *AMA PRA Category 1 Credits™*. Physicians should only claim credit commensurate with the extent of their participation in the activity.

Participants claiming CME credit from this activity may submit the credit hours to the American Osteopathic Association Council on Continuing Medical Education for Category 2 credit.

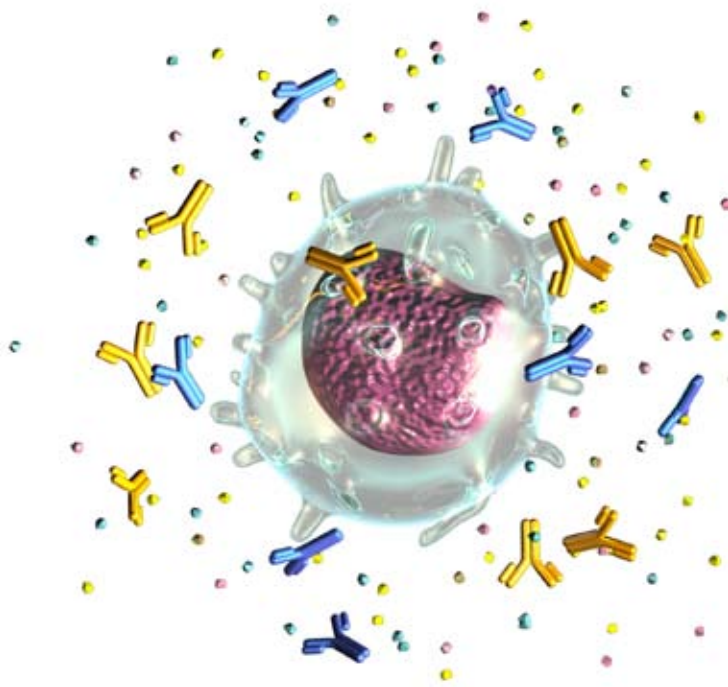
Faculty Disclosure

The Cleveland Clinic Foundation Center for Continuing Education has implemented a policy to comply with the current Accreditation Council for Continuing Medical Education Standards for Commercial Support requiring resolution of all faculty conflicts of interest. Faculty declaring a relevant commercial interest will be identified in the activity syllabus.

GOING GREEN



Electronic Syllabus: Syllabus will only be provided to registrants on a USB flash drive. Attendees are encouraged to bring their laptops to the symposium to view the syllabus.



Registration Form

Course 011628

B Cells, Cytokines, and Systemic Lupus Erythematosus: Exploring New Therapeutic Strategies

Registration Fee: **COMPLIMENTARY**

Registration includes electronic syllabus and lunch

- Physician
- Resident/Fellow
- Nurse
- Nurse Practitioner
- Physician Assistant
- Other

Online Registration

Go to: **www.ccfcmec.org/SLE2009**

Once registered online, please do not mail or fax in a registration form.

.....
Complete the information below if registering by mail or fax.

Please Print Clearly

LAST NAME FIRST NAME

DEGREE/TITLE SPECIALTY

INSTITUTION SUB-SPECIALTY

PREFERRED MAILING ADDRESS

CITY STATE

ZIP PHONE

EMAIL FAX

Practice Type: Office Based Hospital Staff Resident/Fellow

.....
Mailing Address: Cleveland Clinic Foundation Center for Continuing Education
9500 Euclid Avenue, AC313
Cleveland, Ohio 44195

Local: 216-448-0770 • Toll Free: 800-238-6750 • Fax: 216-448-0783
For additional information, email: cmeregistration@ccf.org

The Cleveland Clinic Foundation Center for Continuing Education fully intends to comply with the legal requirements of the Americans with Disabilities Act. If you need assistance, please notify UNITECH Communications® at 216-448-0770 or 800-238-6750 at least two weeks prior to the activity.