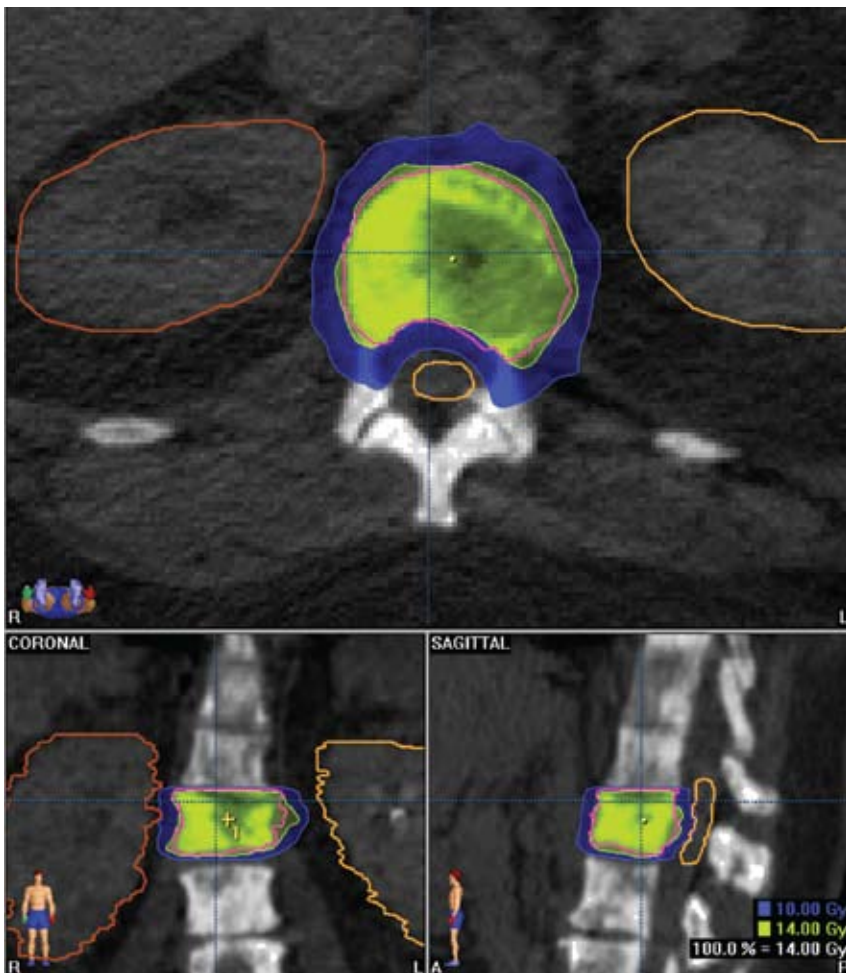


**Brain Tumor and Neuro-Oncology Center, Center for Spine Health
and Taussig Cancer Institute present the**

Third Annual

International Symposium on Stereotactic Body Radiation Therapy and Stereotactic Radiosurgery



February 20-22, 2009

Disney's Grand Floridian Resort & Spa
Lake Buena Vista, FL

About the Symposium



The 2009 International Symposium on Cranial and Spine Radiosurgery (SRS) and Stereotactic Body Radiation Therapy (SBRT) in Lake Buena Vista, Florida, will bring together world leaders in brain-, spine- and body-targeted stereotactic radiation modalities and techniques. Faculty and participants will have 3 days to discuss advances in the treatment of benign and malignant tumors involving multiple organ sites. A broad range of organ-specific technical and clinical experience will be presented with hands-on opportunities to interact with faculty and system vendors.

Scientific abstracts will be solicited from attendees for poster presentation sessions.

Participants will be encouraged to bring cases for multidisciplinary management discussion.

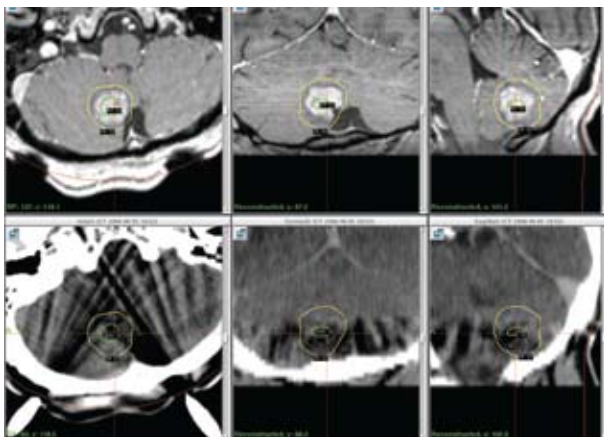
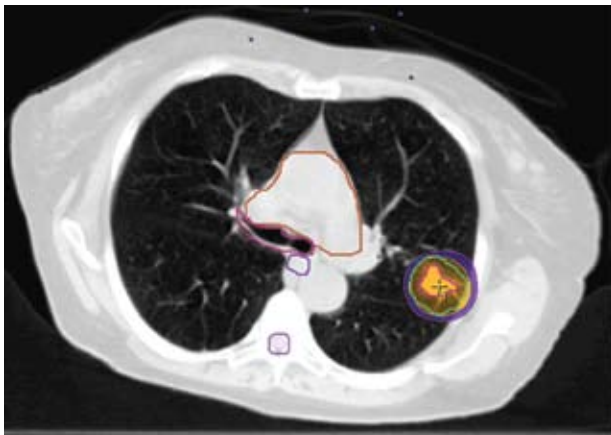
Target Audience

Radiation Oncologists, Neurosurgeons, Medical Physicists, Neuro-Oncologists, Medical Oncologists, Spine Surgeons and Neurologists.

Learning Objectives

Upon completion of this activity, the participant will be able to:

- Identify and discuss stereotactic radiation treatments for benign and malignant tumors
- Describe novel targeting and imaging advances as they relate to CNS Radiosurgery and Stereotactic Body Radiation Therapy
- Integrate these advances in clinical practice





Directors

LILYANA ANGELOV, MD

Head, Section of Spine Tumors
Brain Tumor and Neuro-Oncology Center
Cleveland Clinic

GENE BARNETT, MD

Director, Brain Tumor and Neuro-Oncology Center
Cleveland Clinic

EDWARD BENZEL, MD

Chairman, Neurological Surgery
Director, Center for Spine Health
Cleveland Clinic

SAMUEL CHAO, MD

Associate Staff, Brain Tumor and Neuro-Oncology
Center
Radiation Oncology
Cleveland Clinic

JOHN SUH, MD

Chairman, Radiation Oncology
Cleveland Clinic

Guest Faculty

ANDREA BEZJAK, MD

Associate Professor, Departments of
Radiation Oncology and Health Policy,
Management and Evaluation
University of Toronto
Staff Radiation Oncologist
Princess Margaret Hospital
Toronto, Ontario, Canada

MARK BILSKY, MD

Associate Attending, Neurosurgery
Memorial Sloan-Kettering Cancer Center
Associate Professor, Weill Cornell
University Medical Center
New York, NY

JOHN BUATTI, MD

Professor and Head, Radiation Oncology
University of Iowa Carver College of Medicine
Iowa City, IA

MARK BUYOUNOUSKI, MD, MS

Radiation Oncology
Fox Chase Cancer Center
Philadelphia, PA

ERIC CHANG, MD

Associate Professor of Radiation Oncology
Deputy Section Chief, Director of Research Affairs
for CNS and Pediatric Services
Director, Stereotactic Spine Radiotherapy Program
University of Texas
MD Anderson Cancer Center
Houston, TX

JOE CHANG, MD, PhD

Associate Professor, Clinical Service Chief
Thoracic Radiation Oncology
University of Texas
MD Anderson Cancer Center
Houston, TX

KARYN A. GOODMAN, MD

Department of Radiation Oncology
Memorial Sloan-Kettering Cancer Center
New York, NY

DAVID A. LARSON, MD, PhD

Professor Emeritus, Radiation Oncology
University of California, San Francisco
San Francisco, CA

RONALD C. MCGARRY, MD, PhD

Clinical Associate Professor
Department of Radiation Medicine
University of Kentucky
Lexington, KY

PAUL MEDIN, PhD

Associate Professor, Radiation Oncology
UT Southwestern Medical Center
Dallas, TX

MINESH P. MEHTA, MD

Professor, Department of Human Oncology
University of Wisconsin
Madison, WI

YASUSHI NAGATA, MD

Professor, Division of Radiation Oncology
Hiroshima University Hospital
Hiroshima, Japan

ARJUN SAHGAL, MD

The Princess Margaret Hospital and the Sunnybrook
Odette Cancer Centre
Department of Radiation Oncology
University of Toronto
Toronto, Ontario, Canada

JASON SHEEHAN, MD, PhD

Assistant Professor
Department of Neurological Surgery
University of Virginia
Charlottesville, VA

BIN S. TEH, MD

Professor and Vice Chair
Department of Radiation Oncology
The Methodist Cancer Center
Houston, TX

ROBERT D. TIMMERMAN, MD

Department of Radiation Oncology
UT Southwestern Medical Center
Dallas, TX

Cleveland Clinic Faculty

STEPHEN GAJDOS, MS

Project Staff, Radiation Oncology

AJIT A. KRISHNANEY, MD

Associate Staff, Center for Spine Health

GREGORY VIDETIC, MD

Staff, Radiation Oncology

MICHAEL VOGELBAUM, MD, PhD

Associate Director
Brain Tumor and Neuro-Oncology Center



THURSDAY, FEBRUARY 19, 2009

6:00 pm - 7:30 pm Early Registration and Welcome Reception – Whitehall Room

FRIDAY, FEBRUARY 20, 2009

7:00 am Registration/Continental Breakfast/Exhibits/Posters – St. Augustine Hall

8:00 am Welcome – Lilyana Angelov

Brain SRS – Moderated by John Suh

8:15 am John Suh – Stereotactic Radiosurgery for Intracranial Arteriovenous Malformations

8:40 am Minesh Mehta – Radiosurgery for Acoustic Neuromas

9:05 am Samuel Chao – Radiosurgery for Meningiomas

9:30 am John Buatti – Radiosurgery in the Future: New Techniques and Applications

9:55 am Michael Vogelbaum – Ongoing Controversies in Cranial Radiosurgery

10:20 am David Larson – Radiation Treatment of Brain Metastases: Old versus New

10:45 am Refreshment Break & Exhibits

Spine and Peripheral Nerve SRS – Moderated by Edward Benzel

11:10 am Ajit Krishnaney – Surgical Management of Spinal Metastases

11:35 am Arjun Sahgal – Inter- and Intra-fractional Motion for Spine Stereotactic Body Radiotherapy and the Dosimetric Impact

12:00 noon Eric Chang – SBRT for Spine Mets: Radiobiology and Clinical Updates

12:25 pm Lilyana Angelov – Spine Radiosurgery: Impact on Pain and Quality of Life

12:50 pm Adjourn

12:50 pm - **Planning System Demonstration Area** (Non-CME)

3:00 pm

SATURDAY, FEBRUARY 21, 2009

7:30 am Continental Breakfast/Exhibits/Posters – St. Augustine Hall

Plenary Session I – Moderated by Lilyana Angelov

8:00 am Stephen Gajdos – The Role of IGRT in Lung SBRT

8:25 am Paul Medin – Spinal Cord Tolerance to a Radiosurgical Dose Distribution

8:50 am Mark Bilsky – The Integration of Stereotactic Radiosurgery into New Treatment Paradigms for Metastatic Spine Tumors

9:15 am **Hands-on Workshop** (Non-CME)

10:45 am Refreshment Break & Exhibits



Plenary Session II – Moderated by John Suh

- 11:10 am Minessh Mehta – SBRT in Lung Cancer
- 11:35 am Jason Sheehan – Stereotactic Radiosurgery for Pituitary Adenomas: Current Practice and Future Trends
- 12:00 noon Eric Chang – Ongoing Controversies in Proton Therapy
- 12:25 pm Edward Benzel – Spine Tumor Care in the 21st Century: A Programmatic Approach
- 12:50 pm Adjourn

SUNDAY, FEBRUARY 22, 2009

- 7:30 am Continental Breakfast/Exhibits/Posters – St. Augustine Hall

Lung SBRT – Moderated by Gregory Videtic

- 8:00 am Ronald McGarry – SBRT for Early Stage Lung Cancer: An Emerging Standard of Care
- 8:25 am Yasushi Nagata – Current Status of SBRT in Japan
- 8:50 am Gregory Videtic – Stereotactic Body Radiotherapy for Lung Cancer: The Cleveland Clinic Experience
- 9:15 am Andrea Bezzak – Lung SBRT: PMH Experience
- 9:40 am Joe Chang – Stereotactic Body Radiation Therapy in Stage I or Isolated Recurrent NSCLC: MD Anderson Cancer Center Experience
- 10:05 am Refreshment Break & Exhibits

Abdomen, Pelvis, and Extremity SBRT – Moderated by Samuel Chao

- 10:30 am Karyn Goodman – Image-guided Radiotherapy for Pancreas and Liver Malignancies
- 10:55 pm Bin Teh – Is there a Role for SRS/SBRT in the Management of “Radio-Resistant” Renal Cell Carcinoma?
- 11:20 am Mark Buyyounouski – Stereotactic Body Radiotherapy for Prostate Cancer
- 11:45 am Robert Timmerman – Normal Tissue Dose Constraints for SBRT
- 12:10 am Adjourn

* Agenda is subject to change

Symposium Social Activities

Your registration fee includes two social functions—a welcome reception and a reception at *Disney*. Please plan to join your colleagues and the symposium faculty at both of these activities.

Thursday, February 19, 6:00 - 7:30 pm

Welcome Reception

Saturday, February 21, 7:00 - 9:30 pm

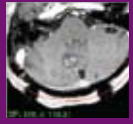
Reception at *Walt Disney World*® Resort

Discount Tickets to All Disney Attractions

The *Walt Disney World*® Resort offers exclusive *Magic Your Way Meeting/Convention* Tickets to attendees, their guests and family members that are not available at the Theme Park entrances. *The Park Hopper*® Option lets you come and go as you please through all four Disney Theme Parks each day, and include a visit to either *Downtown Disney*® or *DisneyQuest*® Indoor Interactive Theme Park. With their “After 2pm” or “After 4pm” Tickets, you can choose to spend your free time in any *Walt Disney World*® Theme Park after 2:00 p.m. or 4:00 p.m. (one Park per day). Choose the Ticket that’s right for you! Save up to 10% by purchasing your Tickets in advance through the *Walt Disney World*® Resort link on the Stereotactic Body Radiation Therapy Symposium website at www.ccfcm.com/stereotactic09 or by calling 407-566-5600.

Register online at www.ccfcm.com/stereotactic09

General Information



Location

Disney's Grand Floridian Resort & Spa
4401 Grand Floridian Way
Lake Buena Vista, FL 32830
Telephone: 407-824-1383
Fax: 407-824-3186

Walt Disney World® Resort is located approximately 25 miles from the Orlando airport and 75 miles from the Tampa airport.

Hotel Reservations

A block of rooms has been reserved at Disney's Grand Floridian Resort & Spa. To make a reservation, contact the hotel directly at 407-824-1383 and ask for the Group Reservations department. Mention the "Cleveland Clinic SBRT/SRS Symposium" to receive the special symposium rate of \$285 per night, plus tax. Reservations must be made by **5:00 pm (EST) on January 30, 2009** to receive this rate. For online reservations go to <http://www.disneyurl.com/ClevelandClinicSBRTSRSSymposium>

Area Attractions

Conveniently located in the heart of the Walt Disney World® Resort, Disney's Grand Floridian Resort & Spa is connected by monorail to the Magic Kingdom® and Epcot®, and offers complimentary transportation to the nearby Disney-MGM Studios, Disney's Animal Kingdom® Park, Downtown Disney®, two water parks, and four championship golf courses. The Resort also features a Florida-inspired pool and courtyard pool, a full-service European-style spa, marina with watercraft rental, and gourmet dining at the five-diamond Victoria & Albert's Restaurant.

Symposium Registration/Refund Policy

Register at www.ccfme.org/Stereotactic09. Registration deadline is **5:00 pm (EST) on Monday, February 16, 2009**. To register after February 16, you must do so on-site. A request for a refund must be received in writing by February 16. No refunds will be given after February 16, but registration is transferable through February 22, 2009. A \$50 cancellation fee will be deducted from the refund for all cancellations.

Please Note: If you register online, you will receive an immediate registration confirmation notice indicating that payment was processed. If the notice contains the word "error" please contact the registration office at 216-448-0777 to confirm registration. If you register by fax, please allow up to two weeks for your registration to be processed. If you register by mail, please allow up to three weeks for your registration to be processed. Mailed or faxed registrations will receive a confirmation notice by U.S. mail unless requested otherwise on the registration form. To check on the status of a faxed or mailed registration, please call 216-448-0777.

Americans with Disabilities Act

The Cleveland Clinic Foundation Center for Continuing Education fully intends to comply with the legal requirements of the Americans with Disabilities Act. If you need assistance, please notify Brigid Ring at 216-445-0754 at least two weeks prior to the activity.

Climate

In February, the average daily high temperature is 75°F.

Accreditation Statement

The Cleveland Clinic Foundation Center for Continuing Education is accredited by the Accreditation Council for Continuing Medical Education to provide continuing medical education for physicians.

The Cleveland Clinic Foundation Center for Continuing Education designates this educational activity for a maximum of 11 *AMA PRA Category 1 Credit(s)*™. Physicians should only claim credit commensurate with the extent of their participation in the activity.

This activity may be submitted for American Osteopathic Association Continuing Medical Education credit in Category 2.

Faculty Disclosure

The Cleveland Clinic Foundation Center for Continuing Education has implemented a policy to comply with the current Accreditation Council for Continuing Medical Education Standards for Commercial Support requiring resolution of all faculty conflicts of interest. Faculty declaring a relevant commercial interest will be identified in the activity syllabus.

For additional information: Ms. Brigid Ring – 800-223-2273 ext. 50754
(e-mail) ringb@ccf.org / (fax) 216-636-5101

Register online at www.ccfme.com/stereotactic09

Call For Papers



Abstracts will be solicited for poster presentations. Posters will be on display throughout the symposium. Poster session participants will be notified of acceptance as well as poster size and content requirements on or before February 9, 2009.

Abstract Requirements

- Deadline date: February 1, 2009. One entry per presenter
- Electronic submissions only through symposium web site at www.ccfcm.org/AbstractsSBRT09
- 250 word limit

Registration Form

Third Annual International Symposium on Stereotactic Body Radiation Therapy and Stereotactic Radiosurgery

For Office Use Only: 020542 Fee _____ M.O.P. _____ Date: _____ CXL/Fee: _____

February 20–22, 2009

(Please type or print clearly)

Name _____ Degree _____
First M.I. Last

Address _____ Home Business

City, State, Zip Code _____

Phone # _____ Fax # _____

E-mail _____ Specialty _____

Symposium Registration Fee (Check appropriate box)

Symposium fee includes registration materials, continental breakfasts, welcome reception and 1 ticket to *Walt Disney World*® Resort reception on Saturday.

Physician/Surgeon: \$450 Corporate/Industry Attendee: \$1250

International (practice outside USA) Physician/Surgeon: \$350

Physicist, Resident*, Fellow*, Nurse, PhD, Allied Health: \$250

Cleveland Clinic Alumni: \$270

Comprecare Affiliate Member: \$293 - I.D. Number _____

I will attend the Welcome Reception on Thursday _____ # of guests

I will attend the *Walt Disney World*® Resort reception (no charge)

_____ Additional ticket(s) for Saturday Reception – \$40 per Person age 10 and up

_____ Additional ticket(s) for Saturday Reception – \$15 per Child age 9 and under

*Letter from program chairman or department chairman must accompany Resident/Fellow registration.

Payment Options

Check Enclosed (Made payable to: The Cleveland Clinic Educational Foundation)

Visa MasterCard AMEX Discover

Card # _____ V-code _____

Name on Card _____ Exp Date _____

Signature _____ Amt Pd \$ _____

Mail completed registration form and payment information to:

The Cleveland Clinic Educational Foundation
P.O. Box 931653
Cleveland, OH 44193-1082

Or, if paying by credit card, registration should be faxed to 216-445-9406.

(Once faxed, do not mail original registration.)

Register online at www.ccfcm.com/stereotactic09



Brain Tumor and Neuro-Oncology Center, Center for Spine Health
and Taussig Cancer Institute present the

Third Annual
**International Symposium on
Stereotactic Body Radiation Therapy
and Stereotactic Radiosurgery**

February 20-22, 2009
Disney's Grand Floridian Resort & Spa
Lake Buena Vista, FL



© Disney



The Cleveland Clinic Foundation
Neurological Institute, JJ36
9500 Euclid Avenue
Cleveland, OH 44195