



# Practical Implementation of Quality Care in Every EP Lab

---

**Wednesday, May 12, 2010 | 6:00 pm – 9:30 pm**

Centennial Ballroom  
Hyatt Regency Denver  
Denver, Colorado

Register today!

[www.ccfcme.org/HRS10Quality](http://www.ccfcme.org/HRS10Quality)



This program is not part of the Heart Rhythm 2010 Official Scientific Sessions as planned by the Heart Rhythm Society Scientific Sessions Committee. This event is neither sponsored nor endorsed by the Heart Rhythm Society.



## Description

The purpose of this satellite symposium is to explore the logistics involved with setting up a practical quality assurance program in an electrophysiology (EP) lab that performs heart rhythm-associated procedures. Fundamental to the delivery of quality care is the measurement of outcomes, which in turn provides data for assessing quality. Attempts have been made to set up national and international registries for outcomes data, but they are too complex and expensive.

What is needed is a practical system that works in most, if not all, EP labs. This symposium will seek to define a system that measures basic elements of quality care that EP labs can implement with a minimum of effort. By designing a practical quality assurance program that can accurately evaluate outcomes, EP lab practitioners will have more objective data from which to evaluate the effectiveness of specific techniques and processes, which, ultimately, will enable them to improve the care of their patients.

## Objectives

After completion of this educational activity, the participant will be able to do the following:

- List a basic set of relevant procedural elements crucial to accurate outcomes analyses in an EP lab;
- Design and implement a practical quality assurance program for evaluating outcomes in an EP Lab;
- Discuss the relationship of the quality assurance program to data registries and benchmarks for outcomes.

## Target Audience

The symposium is directed to cardiologists, cardiovascular surgeons, scientists, electrophysiologists, and associated health care professionals who want to design and implement a practical quality assurance program in their EP lab.

## Symposium Directors

### **Bruce L. Wilkoff, MD**

Professor of Medicine  
Director, Cardiac Pacing and  
Tachyarrhythmia Devices  
Department of Cardiovascular Medicine  
Heart and Vascular Institute  
Cleveland Clinic  
Cleveland, OH

### **Oussama M. Wazni, MD**

Director, EP Labs  
Cardiac Pacing and Electrophysiology  
Director, Clinical Atrial Fibrillation Research  
Department of Cardiovascular Medicine  
Heart and Vascular Institute  
Cleveland Clinic  
Cleveland, OH

## Faculty

### **Sana M. Al-Khatib, MD, MHS, FACC, FHRS**

Co-Director, Duke Center for the Prevention  
of Sudden Cardiac Death  
Chair, Quality Improvement Subcommittee  
Heart Rhythm Society  
Assistant Professor of Medicine  
Division of Cardiology - Cardiac Electrophysiology  
Duke University Medical Center  
Durham, NC

### **Laurence M. Epstein, MD**

Chief, Cardiac Arrhythmia Service  
Brigham and Women's Hospital  
Boston, MA

### **Stephen C. Hammill, MD**

Professor of Medicine  
Division of Cardiovascular Diseases  
Mayo Clinic  
Rochester, MN

### **Andrew D. Krahn, MD, FRCPC, FHRS**

Professor of Medicine  
Division of Cardiology  
University of Western Ontario  
University Hospital  
Ontario, Canada

### **Charles J. Love, MD**

Professor of Clinical Medicine  
Division of Cardiovascular Medicine  
The Ohio State University Medical Center  
Columbus, OH

### **Douglas L. Packer, MD**

Department of Cardiovascular Diseases  
Mayo Clinic  
Rochester, MN

### **Arjun Sharma, MD**

Vice President, Patient Safety  
Boston Scientific Corporation CRM  
Minneapolis, MN



## Agenda | May 12, 2010

- 6:00 pm Registration and Reception  
*Centennial Ballroom Foyer*
- 6:50 pm Welcome and Introduction  
*Bruce L. Wilkoff, MD*  
*Oussama M. Wazni, MD*
- 7:00 pm Is it Possible for Every EP LAB, Big and Small, to Set Up a Practical Quality Assurance Program that Measures Outcomes that Matter?  
*Oussama M. Wazni, MD*
- 7:10 pm What Is the Relevance to Ablation Procedures, Atrial Fib and Non Atrial Fib?  
*Douglas L. Packer, MD*
- 7:20 pm What Is the Relevance to Device Procedures, Pacers, ICDS and Extraction?  
*Laurence M. Epstein, MD*
- 7:30 pm Thinking Small, What Are the Minimum Number of Important Measures of Quality?  
*Charles J. Love, MD*
- 7:40 pm Panel Discussion  
*Oussama M. Wazni, MD*  
*Douglas L. Packer, MD*  
*Laurence M. Epstein, MD*  
*Charles J. Love, MD*
- 8:00 pm Refreshment Break
- 8:20 pm Assuming that the EP Community Knows Better than the Government, the Regulators and the Insurance Industry About What Is Important Regarding These Procedures, Can We Make this Relevant to the Rest of Our Partners in Health Care Delivery?  
*Sana M. Al-Khatib, MD*
- 8:30 pm What Relationship Could this Small Hospital-Based Outcomes Registry Have to National Registries or Broad-Based Benchmarks?  
*Stephen C. Hammill, MD*
- 8:40 pm How Is this Relevant to the International EP Community?  
*Andrew D. Krahn, MD*
- 8:50 pm What is the Role of Industry in Quality Assurance Programs?  
*Arjun Sharma, MD*
- 9:00 pm Panel Discussion  
*Sana M. Al-Khatib, MD*  
*Stephen C. Hammill, MD*  
*Andrew D. Krahn, MD*  
*Arjun Sharma, MD*
- 9:20 pm Summary
- 9:30 pm Adjourn



## General Information

### Location

#### Hyatt Regency Denver

Centennial Ballroom  
650 15th Street  
Denver, CO 80202

Phone: 303.436.1234  
Fax: 303.486.4450

### Accreditation

The Cleveland Clinic Foundation Center for Continuing Education is accredited by the Accreditation Council for Continuing Medical Education (ACCME) to provide continuing medical education for physicians.

The Cleveland Clinic Foundation Center for Continuing Education designates this educational activity for a maximum of 2.25 *AMA PRA Category 1 Credits™*. Physicians should only claim credit commensurate with the extent of their participation in the activity.

Participants claiming CME credit from this activity may submit the credit hours to the American Osteopathic Association Council on Continuing Medical Education for Category 2 credit.

The Ohio Board of Nursing will accept at face value the number of contact hours awarded for an educational activity that has been approved for CE by a nationally accredited system of CE approval. Therefore, the 2.25 *AMA PRA Category 1 Credits™* will be accepted for nursing credits. Nurses from other states should contact their State Board of Nursing.

### Faculty Disclosure

The Cleveland Clinic Foundation Center for Continuing Education has implemented a policy to comply with the current Accreditation Council for Continuing Medical Education Standards for Commercial Support requiring resolution of all faculty conflicts of interest. Faculty declaring a relevant commercial interest will be identified in the activity syllabus.

### Americans with Disabilities Act

The Cleveland Clinic Foundation Center for Continuing Education fully intends to comply with the legal requirements of the Americans with Disabilities Act. If you need assistance, please notify The Center for Continuing Education at 800-238-6750 at least two weeks prior to the activity.

### Information

For further information about this symposium, contact The Cleveland Clinic Center for Continuing Education at:

Local: 216.448.0770  
Toll Free: 800.238.6750  
Fax: 216.448.0784

Web Address: [www.ccfcmec.org/HRS10Quality](http://www.ccfcmec.org/HRS10Quality)

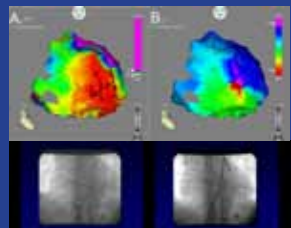
For questions about registering online, call 216.448.0777 or email [cmeregistration@ccf.org](mailto:cmeregistration@ccf.org)

## MARK YOUR CALENDAR

*Additional satellite symposium  
presented by Cleveland Clinic:*

## Interventional Pericardiology

Tuesday, May 11, 2010 | Capitol Ballroom  
Denver Hyatt Regency | 2:00 pm – 7:00 pm



For more information, go to [www.ccfcmec.org/Pericardio10](http://www.ccfcmec.org/Pericardio10)

# Registration Form

## Practical Implementation of Quality Care in Every EP Lab

Wednesday, May 12, 2010  
Hyatt Regency Denver | Denver, CO

Course 011691 • Office Use Only

Fee \_\_\_\_\_ Date \_\_\_\_\_

MOP \_\_\_\_\_ CXL/Fee \_\_\_\_\_

### Registration Fee: COMPLIMENTARY

- |  |   |
|--|---|
| <input type="checkbox"/> Physician       | <input type="checkbox"/> Physician Assistant/Nurse/Nurse Practitioner |
| <input type="checkbox"/> PhD             | <input type="checkbox"/> Other  |
| <input type="checkbox"/> Resident/Fellow |   |

### Register Online

[www.ccfcmecme.org/HRS10Quality](http://www.ccfcmecme.org/HRS10Quality)

If you are unable to register online, please fax the form to 216-448-0783.  
Once you register online, please do not fax a registration form.

### Complete the information below if registering by mail or fax

#### PLEASE PRINT

Last Name:	First Name:	MI:		
Degree:	Specialty:			
Office/Organization:				
Preferred Mailing Address:				
City:	State:			
Country:	Phone:			
Email Address:	Fax:			
Practice Type:	<input type="checkbox"/> Office-Based	<input type="checkbox"/> Hospital Staff	<input type="checkbox"/> Resident/Fellow	<input type="checkbox"/> Other

Fax Number: 216-448.0783

Mailing address: The Cleveland Clinic Educational Foundation  
PO Box 931653, Cleveland, OH 44193-1082

For questions about registering online, call 216.448.0777 or email [CMERegistration@ccf.org](mailto:CMERegistration@ccf.org)

Cleveland Clinic Center for Continuing Education presents:

## Lead Management 2009: Heart Rhythm Society Guidelines and Case-Based Implementation CME Webcast and Monograph Series

### Objectives

- Review the facilities, personnel, and training required to operate a successful lead management center.
- Review appropriate indications and standards of care for patients with implantable devices as prescribed in HRS guidelines.
- Identify the data and information that need to be collected, reported, and reviewed to successfully implement outcomes and quality measures.
- Highlight processes that model quality decision making in caring for complicated lead management situations.
- Identify the skills, experience, and knowledge base required for physicians, personnel, and clinical teams to provide competent lead management services.



These activities have been approved for AMA PRA Category 1 Credit™.

Participate Today! [www.ccfcmecme.org/LeadMgmt](http://www.ccfcmecme.org/LeadMgmt)

 **Cleveland Clinic**  
The Cleveland Clinic Foundation  
Center for Continuing Education  
9500 Euclid Avenue, AC313  
Cleveland, OH 44195

NON-PROFIT ORG.  
U.S. Postage Paid  
Cleveland, OH  
Permit No. 1918

# Practical Implementation of Quality Care in Every EP Lab

Wednesday, May 12, 2010 | 6:00 pm – 9:30 pm

Centennial Ballroom

Hyatt Regency Denver | Denver, CO

Register Today! [www.cccfme.org/HRS10Quality](http://www.cccfme.org/HRS10Quality)

 **Cleveland Clinic**  
Over 75 Years of Excellence in  
CONTINUING MEDICAL EDUCATION