



# Advanced Cranial Radiosurgery

Cleveland Clinic Gamma Knife Center

Cleveland, OH



## 2024 In-Person Advanced Course Dates

June 6-7

August 22-23

October 24-25



To register to attend, contact:

Shana Imler, [spades@ccf.org](mailto:spades@ccf.org) or 216-444-9380



## Learning Objectives

1. Identify the advanced principles and biophysics of radiosurgery and how they apply to day-to-day patient treatment.
2. Review the clinical indications, parameters of treatment, and outcomes of complex radiosurgery cases.
3. Recognize radiation safety issues and principles, as well as become familiar with the emergency procedures as they pertain to radiosurgery.
4. Apply the advanced principles of stereotactic frame application, imaging, and use of radiosurgery treatment hardware.

### Course Location

The radiosurgery course is held in the Cleveland Clinic Gamma Knife Center located in the Taussig Cancer Center, Room CA-LL-63.

## Course Description

### Advanced Course

This educational experience provides an opportunity to extend the experienced practitioner's range of treatment options to include this more advanced form of stereotactic radiosurgery. Participants will become familiar with the new features when upgrading from previous models. At the conclusion of the two days, participants will receive a certificate of course attendance. Radiosurgery training is a prerequisite.

### Advanced Course Target Audience

Neurosurgeons, medical physicists, radiation oncologists, neuro-otolaryngologists and other health care professionals currently using radiosurgery in their practice.





## Accreditation

In support of improving patient care, Cleveland Clinic Center for Continuing Education is jointly accredited by the Accreditation Council for Continuing Medical Education (ACCME), the Accreditation Council for Pharmacy Education (ACPE), and the American Nurses Credentialing Center (ANCC), to provide continuing education for the healthcare team.

### CREDIT DESIGNATION

- **American Medical Association (AMA)**

Cleveland Clinic Center for Continuing Education designates this live activity for a maximum of 10.75 *AMA PRA Category 1 Credits*<sup>™</sup>. Physicians should claim only the credit commensurate with the extent of their participation in the activity.

Participants claiming CME credit from this activity may submit the credit hours to the American Osteopathic Association for Category 2 credit.

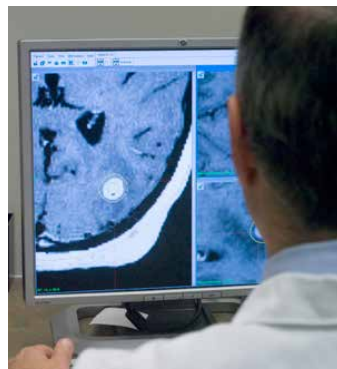
- **Certificate of Participation**

A certificate of participation will be provided to other health care professionals for requesting credits in accordance with their professional boards and/or associations.

- **American Board of Surgery (ABS) Maintenance of Certification (MOC)**

Successful completion of this CME activity enables the learner to earn credit toward the CME requirements of the American Board of Surgery's Continuous Certification program. It is the CME activity provider's responsibility to submit learner completion information to ACCME for the purpose of granting ABS credit.

- Credit will be reported within 30 days of claiming credit.



## Program Directors

### Gene H. Barnett, MD (Primary Director)

Director, Gamma Knife Center

Professor and Director, Cleveland Clinic Rose Ella Burkhardt Brain Tumor and Neuro-Oncology Center

### Lilyana Angelov, MD

Head, Cleveland Clinic Section of Spinal Radiosurgery

Program Co-Director, Gamma Knife Center

### John Suh, MD

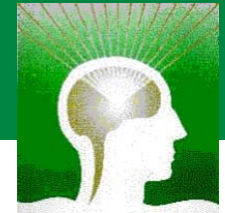
Chairman, Department of Radiation Oncology

Program Co-Director, Gamma Knife Center

## Faculty Disclosure Statement

The Cleveland Clinic Center for Continuing Education has implemented a policy to comply with the current Accreditation Council for Continuing Medical Education Standards for Integrity and Independence requiring mitigation of all faculty conflicts of interest. Faculty declaring a relevant financial relationship will be identified in the activity syllabus.

# Agenda Sample



## Thursday

8:00 AM	Introduction to Advanced Features
9:15 AM	Advanced Frameless Radiosurgery
11:30 AM	Lunch
12:15 PM	SRS and Immunotherapy / Targeted Therapies
12:45 PM	Radiation Necrosis Diagnostic and Treatment Strategies
1:10 PM	Advanced Radiosurgery for AVM using Non-Stereotactic Angiography
2:30 PM	Advanced Planning
4:20 PM	Adjourn

## Friday

7:30 AM	Radiosurgery Using General Anesthesia
8:00 AM	Quality Assurance and Emergency Procedures
9:00 AM	Commissioning (Physics) or Billing (Physicians)
9:45 AM	Advanced Marketing / Programmatic Strategies
10:15 AM	Imaging for Stereotactic Radiosurgery Planning
10:45 AM	Dose Rate - Biological Effects
11:00 AM	Certificates / Lunch
12:00 PM	Adjourn

*Time will be allotted for Questions and Answers throughout the course.*

## Advanced Cranial Radiosurgery

Cleveland Clinic Gamma Knife Center Cleveland, Ohio

To register contact Shana Imler at [spades@ccf.org](mailto:spades@ccf.org) or 216-444-9380



## In-Person Advanced Course Dates

June 6-7, 2024

August 22-23, 2024

October 24-25, 2024

## Tuition

### Introductory and Upgrade Courses (2 days)

\$4,500 - Physicians, Surgeons, Physicists

*(Includes course syllabus, breakfast & lunch each day, and one dinner.)*

Attendance at this radiosurgery course does not imply or confirm competency to perform stereotactic radiosurgery. A certificate of attendance will be awarded to those who participate in ALL of the lectures and hands-on practice.

This course does NOT provide training on older radiosurgery units. In order to take the Advance Course, current use on a Perfexion, Icon or Esprit required.

*Cleveland Clinic Center for Continuing Education reserves the right to cancel, postpone or modify an activity type at our sole discretion. In the event that this occurs, any registration fee(s) paid will be refunded. Be advised that Cleveland Clinic is not responsible for related costs including airline tickets, hotel costs, or any similar fee penalties incurred as a result of any Activity cancellations or changes.*

### Health & Safety Information

All applicable Centers for Disease Control (CDC), state, and local safety protocols will be enforced for this event. Additional attendance requirements may be implemented to ensure attendee health and safety.

## Cancellation Policy Prior to the Course Commencement:

Up to 21 days, \$500; from 20-14 days, 25% of the fee.

Up to 13-7 days, 50% refund prior to commencement of the course.

No refunds less than 7 days but registration is transferable for the same session.

**Minimum of five attendees required per course.** We recommend that you **do not make travel arrangements** until you have received confirmation from the course manager that the course will be held. This is a separate confirmation from the confirmation you receive when registering online. In the event a course must be cancelled due to low enrollment, a full refund will be issued.

### Payment: \$500 deposit is required at the time of registration.

Tuition must be paid in full prior to the start of the course.

Questions? Contact Martha Tobin by phone, 216.445.3449, 800.223.2273, extension 53449 or by e-mail [tobinm@ccf.org](mailto:tobinm@ccf.org)

## Americans with Disabilities Act

The Cleveland Clinic Center for Continuing Education fully intends to comply with the legal requirements of the Americans with Disabilities Act. If you need assistance, please notify Martha Tobin at 216.444.3449 at least two weeks prior to the activity.